

## Index - Levnedsmiddelfittings

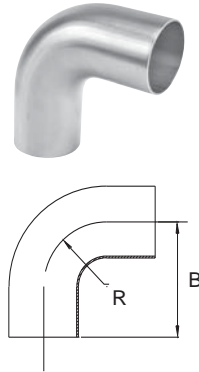
Aktuator / Actuator	fra side / from page	38
Butterflyventiler / Butterfly valve	fra side / from page	38
Bøjninger / Elbows	fra side / from page	07
Clamps / Clamps	fra side / from page	32
- clampoversigt / Clamp surveys	fra side / from page	30
Hagenøgle / Spanner	fra side / from page	37
Kontraventil / check valves	fra side / from page	37
Konusser / reducers	fra side / from page	14
Miniclamps / mini clamps	fra side / from page	36
Rørholdere / Pipe supports	fra side / from page	17
Slangestuds / Hose Nozzle	fra side / from page	10
T-stykker / T-pcs.	fra side / from page	11
Unioner / Unions	fra side / from page	22
- unionoversigt / union surveys	fra side / from page	20



Bøjning N130  
DS/SMS Svejst bøjning, 90°, ISO 2037  
DS/SMS Welded elbow, 90°, ISO 2037

Cert.: EN 10204/3.1

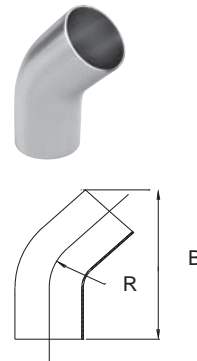
Dim. mm	B mm	R mm	Kg/ stk/pc	AISI 304L	316L
				EN 1.4307	1.4404
				Varenr. Article no.	Varenr. Article no.
25,0 x 1,2	55,0	25,0	0,067	● 25000	● 25001
32,0 x 1,2	64,0	32,0	0,101	● 25002	● 25003
38,0 x 1,2	70,0	38,0	0,138	● 25004	● 25005
51,0 x 1,2	82,0	51,0	0,208	● 25006	● 25007
63,5 x 1,6	105,0	64,0	0,440	● 25008	● 25009
76,1 x 2,0	110,0	76,0	0,645	● 25010	● 25011
101,6 x 2,0	150,0	150,0	1,107	● 25012	● 25013



Bøjning N130  
DS/SMS Svejst bøjning, 45°, ISO 2037  
DS/SMS Welded elbow, 45°, ISO 2037

Cert.: EN 10204/3.1

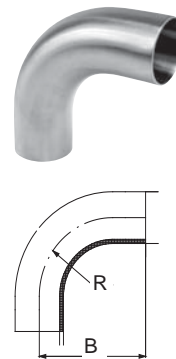
Dim. mm	B mm	R mm	Kg/ stk/pc	AISI 304L	316L
				EN 1.4307	1.4404
				Varenr. Article no.	Varenr. Article no.
25,0 x 1,2	70,0	25,0	0,049	● 25014	● 25015
38,0 x 1,2	87,0	38,0	0,089	● 25016	● 25017
51,0 x 1,2	119,5	51,0	0,162	● 25018	● 25019
63,5 x 1,6	136,0	64,0	0,301	● 25020	● 25021
76,1 x 2,0	157,0	76,0	0,524	● 25022	● 25023
101,6 x 2,0	226,5	150,0	1,045	● 25024	● 25025



Bøjning N130  
ISO Svejst bøjning, 90° lang, ISO 2037  
ISO Welded elbow, 90°, long type, ISO 2037

Cert.: EN 10204/3.1

Dim. mm	B mm	R mm	Kg/ stk/pc	AISI 304L	316L
				EN 1.4307	1.4404
				Varenr. Article no.	Varenr. Article no.
25,0 x 1,2	65,0	37,5	0,053	● 18275	● 18285
38,0 x 1,2	85,0	57,0	0,167	● 18276	● 18286
51,0 x 1,2	110,0	76,5	0,297	● 18277	● 18287
63,5 x 1,6	135,0	95,3	0,538	● 18278	● 18288
76,1 x 1,6	155,0	114,2	0,770	● 18279	● 18289
101,6 x 2,0	195,0	152,5	1,588	● 18280	● 18290



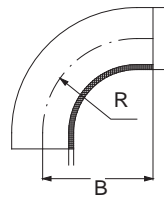
● Lager / Stock ▸ Værkslager / Mill stock

De anførte mål og tegninger er vejledende  
Measures and drawings presented are guidelines

Bøjning N130  
 ISO Svejest bøjning, 90° kort, ISO 2037  
 ISO Welded elbow, 90° short type, ISO 2037

Cert.: EN 10204/3.1

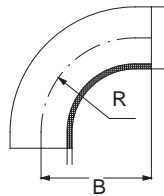
Dim. mm	B mm	R mm	Kg/ stk/pc	AISI 316L EN 1.4404	Varenr. Article no.
25,0 x 1,2	44	37,5	0,070	● 32842	
38,0 x 1,2	64	57,0	0,130	● 32843	
51,0 x 1,2	89	76,5	0,290	● 32844	
63,5 x 1,6	114	95,3	0,590	● 32845	
76,1 x 1,6	134	114,2	0,730	● 32846	
101,6 x 2,0	174	152,5	1,130	● 32847	



Bøjning N130  
 ISO Svejest bøjning, 90° ekstra kort, ISO 2037  
 ISO Welded elbow, 90° extra short type, ISO 2037

Cert.: EN 10204/3.1

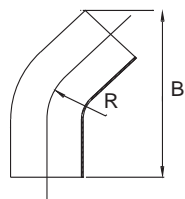
Dim. mm	B mm	R mm	Kg/ stk/pc	AISI 316L EN1.4404	Varenr. Article no.
25,0 x 1,2	38,1	37,5	0,070	● 33411	
38,0 x 1,2	57,2	57,0	0,130	● 33412	
51,0 x 1,2	76,2	76,5	0,290	● 33413	
63,5 x 1,6	95,2	95,3	0,590	● 33414	
76,1 x 1,6	114,3	114,2	0,730	● 33415	
101,6 x 2,0	152,4	152,5	1,130	● 33416	



Bøjning N130  
 ISO Svejest bøjning, 45°, ISO 2037  
 ISO Welded elbow, 45°, ISO 2037

Cert.: EN 10204/3.1

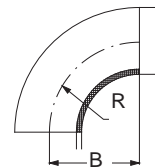
Dim. mm	B mm	R mm	Kg/ stk/pc	AISI 304	316L
				EN1.4307	1.4404
				Varenr. Article no.	Varenr. Article no.
25,0 x 1,2	70,0	25,0	0,050	● 18295	● 18305
38,0 x 1,2	87,0	38,0	0,088	● 18296	● 18306
51,0 x 1,2	119,5	51,0	0,156	● 18297	● 18307
63,5 x 1,6	136,0	64,0	0,300	● 18298	● 18308
76,1 x 1,6	157,0	76,0	0,400	● 18299	● 18309
101,6 x 2,0	226,5	150,0	1,036	● 18300	● 18310



Bøjning N130  
DIN Svejst bøjning, 90°, DIN 11850  
DIN Welded elbow, 90°, DIN 11850

Cert.: EN 10204/3.1

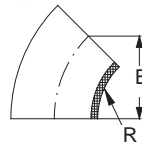
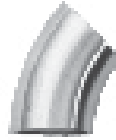
Dim. mm	DIN DN	B mm	R mm	Kg/ stk/pc	AISI EN	316L 1.4404
						Varenr. Article no.
12,0 x 1,5	10	26,0	26,0	0,014	●	32848
13,0 x 1,5	10	26,0	26,0	0,013	●	34130
18,0 x 1,5	15	35,0	35,0	0,032	●	32849
19,0 x 1,5	15	35,0	35,0	0,032	●	34131
22,0 x 1,5	20	40,0	40,0	0,046	●	32850
23,0 x 1,5	20	40,0	40,0	0,046	●	34132
28,0 x 1,5	25	50,0	50,0	0,070	●	32851
29,0 x 1,5	25	50,0	50,0	0,070	●	34133
35,0 x 1,5	32	55,0	55,0	0,085	●	34169
40,0 x 1,5	40	60,0	60,0	0,130	●	32852
41,0 x 1,5	40	60,0	60,0	0,130	●	34134
52,0 x 1,5	50	70,0	70,0	0,200	●	32853
53,0 x 1,5	50	70,0	70,0	0,200	●	34135
70,0 x 2,0	65	80,0	80,0	0,350	●	32854
85,0 x 2,0	80	90,0	90,0	0,540	●	32855
104,0 x 2,0	100	100,0	100,0	0,730	●	32856
129,0 x 2,0	125	187,5	187,5	1,870	●	32857
154,0 x 2,0	150	225,0	225,0	2,696	●	32858
204,0 x 2,0	200	300,0	300,0	4,750	●	32859
254,0 x 2,0	250	375,0	375,0	8,875	▶	32860



Bøjning N130  
 DIN Svejst bøjning, 45°, DIN 11850  
 DIN Welded elbow, 45°, DIN 11850

Cert.: EN 10204/3.1

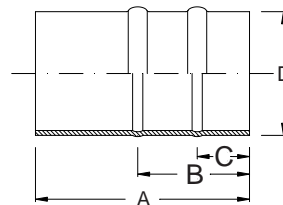
Dim. mm	DIN DN	B mm	R mm	Kg/ stk/pc	AISI 316L EN1.4404	Varenr. Article no.
13,0 x 1,5	10	17,0	26,0	0,010	● 34136	
19,0 x 1,5	15	23,0	35,0	0,017	● 34137	
23,0 x 1,5	20	27,0	40,0	0,025	● 34138	
29,0 x 1,5	25	34,0	50,0	0,040	● 34139	
35,0 x 1,5	32	37,0	55,0	0,055	● 34170	
41,0 x 1,5	40	41,0	60,0	0,070	● 34140	
53,0 x 1,5	50	48,0	70,0	0,100	● 34141	
70,0 x 2,0	65	55,5	80,0	0,200	● 32864	
85,0 x 2,0	80	62,6	90,0	0,290	● 32865	
104,0 x 2,0	100	69,6	100,0	0,380	● 32866	
129,0 x 2,0	125	131,5	187,5	0,935	● 32867	
154,0 x 2,0	150	158,0	225,0	1,340	● 32868	



Slangestuds N165  
 DS/SMS/ISO Slangestuds, ISO 2037  
 DS/SMS/ISO Hose Nozzle, ISO 2037

Cert.: EN 10204/3.1

Dim. mm	A mm	B mm	C mm	D mm	Kg/ stk/pc	AISI 316 L EN 1.4404	Varenr. Article no.
25,0	60,0	35,0	15,0	25,4	0,030	● 34184	
38,0	80,0	45,0	20,0	38,1	0,090	● 34185	
51,0	90,0	45,0	20,0	50,8	0,140	● 34186	
63,5	100,0	50,0	25,5	63,5	0,270	● 34187	
76,1	110,0	55,0	25,0	76,1	0,350	● 34188	
101,6	120,0	65,0	26,0	102,0	0,490	● 34189	



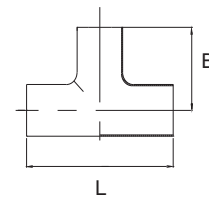
T-stykke N131

DS/ISO/SMS Svejst t-stykke, lang gren, ISO 2037

DS/ISO/SMS Welded T-pcs, long branch, ISO 2037

Cert.: EN 10204/3.1

Dim. mm	L mm	B mm	Kg/ stk/pc	AISI EN	304	316L
					1.4307	1.4404
				Varenr. Article no.	Varenr. Article no.	
25,0 x 1,2	110,0	55,0	0,120		● 25026	● 25027
32,0 x 1,2	128,0	64,0	0,170		● 25028	
38,0 x 1,2	140,0	70,0	0,220		● 25030	● 25029
51,0 x 1,2	164,0	82,0	0,340		● 25032	● 25031
63,5 x 1,6	210,0	105,0	0,655		● 25034	● 25033
76,1 x 2,0	220,0	110,0	1,090		● 25036	● 25035
101,6 x 2,0	300,0	150,0	1,950		● 25038	● 25037



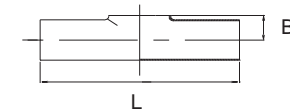
T-stykke N131

DS/ISO/SMS Svejst t-stykke, kort gren, ISO 2037

DS/ISO/SMS Welded T-pcs., short branch, ISO 2037

Cert.: EN 10204/3.1

Dim. mm	L mm	B mm	Kg/ stk/pc	AISI EN	304	316L
					1.4307	1.4404
				Varenr. Article no.	Varenr. Article no.	
25,0 x 1,2	110,0	14,5	0,090		● 25040	● 25041
38,0 x 1,2	140,0	21,5	0,160		● 25042	● 25043
51,0 x 1,2	164,0	29,0	0,260		● 25044	● 25045
63,5 x 1,6	210,0	35,0	0,490		● 25046	● 25047
76,1 x 2,0	220,0	43,0	0,830		● 25048	● 25049
101,6 x 2,0	300,0	56,0	1,480		● 25050	● 25051



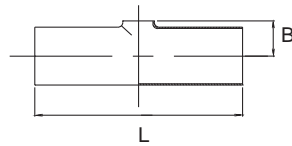
## T-stykke N131

DS/ISO/SMS Svejst t-stykke reduceret kort gren, ISO 2037

DS/ISO/SMS Welded T-pcs., reduced short branch, ISO 2037

Cert.: EN 10204/3.1

Dim. mm	L mm	B mm	Kg/ stk/pc	AISI EN	316L 1.4404	Varenr. Article no.
38,0 x 25,0 x 1,2	140,0	22,0	0,160			● 25052
51,0 x 25,0 x 1,2	164,0	29,0	0,260			● 25053
51,0 x 38,0 x 1,2	164,0	29,0	0,260			● 25054
63,5 x 25,0 x 1,6	210,0	35,0	0,490			● 25055
63,5 x 38,0 x 1,6	210,0	36,0	0,490			● 25056
63,5 x 51,0 x 1,6	210,0	35,0	0,830			● 25057
76,1 x 25,0 x 2,0	220,0	43,0	0,840			● 32450
76,1 x 38,0 x 2,0	220,0	43,0	0,830			● 25058
76,1 x 51,0 x 2,0	220,0	43,0	0,830			● 25059
76,1 x 63,5 x 2,0	220,0	43,0	0,830			● 25060
101,6 x 25,0 x 2,0	300,0	56,0	1,500			● 32451
101,6 x 38,0 x 2,0	300,0	56,0	1,490			● 32452
101,6 x 51,0 x 2,0	300,0	56,0	1,480			● 25061
101,6 x 63,5 x 2,0	300,0	56,0	1,480			● 25062
101,6 x 76,1 x 2,0	300,0	56,0	1,480			● 25063

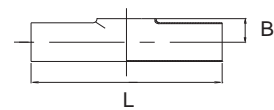




T-stykke N131  
DIN Svejst t-stykke kort gren, DIN 11850  
DIN Welded T-pcs., short branch, DIN 11850

Cert.: EN 10204/3.1

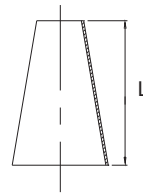
Dim. mm	DIN DN	L mm	B mm	Kg/ stk/pc	AISI 316L EN 1.4404	Varenr. Article no.
12,0 x 1,5	10	52,0	8,0	0,020	●	32881
13,0 x 1,5	10	52,0	8,0	0,020	●	34142
18,0 x 1,5	15	70,0	11,5	0,044	●	32882
19,0 x 1,5	15	70,0	11,5	0,044	●	34143
22,0 x 1,5	20	80,0	14,5	0,059	●	32883
23,0 x 1,5	20	80,0	14,5	0,059	●	34144
28,0 x 1,5	25	100,0	16,0	0,080	●	32884
29,0 x 1,5	25	100,0	16,0	0,085	●	34145
35,0 x 1,5	32	110,0	19,5	0,090	●	34171
40,0 x 1,5	40	120,0	22,0	0,150	●	32885
41,0 x 1,5	40	120,0	23,0	0,120	●	34146
52,0 x 1,5	50	140,0	29,5	0,240	●	32886
53,0 x 1,5	50	140,0	30,0	0,150	●	34147
70,0 x 2,0	65	160,0	40,0	0,480	●	32887
85,0 x 2,0	80	180,0	47,5	0,628	●	32888
104,0 x 2,0	100	200,0	58,5	0,910	●	32889
129,0 x 2,0	125	375,0	74,0	2,168	●	32890
154,0 x 2,0	150	450,0	90,0	3,040	●	32891
204,0 x 2,0	200	600,0	115,0	5,950	●	32892



Konus N132  
 DS/ISO/SMS Svejst konus, koncentrisk, ISO 2037  
 DS/ISO/SMS Welded concentric reducer, ISO 2037

Cert.: EN 10204/3.1

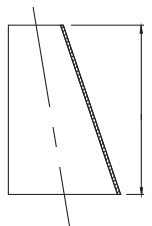
Dim. mm	L mm	Kg/ stk/pc	AISI 316L EN 1.4404 Varenr. Article no.
38,0 x 25,0 x 1,2	44,0	0,050	● 25069
51,0 x 25,0 x 1,2	86,0	0,100	● 25070
51,0 x 38,0 x 1,2	42,0	0,070	● 25071
63,5 x 38,0 x 1,2	82,0	0,120	● 25072
63,5 x 51,0 x 1,2	40,0	0,080	● 25073
76,1 x 38,0 x 1,2	71,0	0,200	● 33272
76,1 x 51,0 x 1,2	79,0	0,210	● 25074
76,1 x 63,5 x 1,6	39,0	0,110	● 25075
101,6 x 51,0 x 2,0	95,0	0,350	● 33271
101,6 x 63,5 x 2,0	120,0	0,400	● 27727
101,6 x 76,1 x 2,0	81,0	0,350	● 25076



Konus N132  
 DS/ISO/SMS Svejst konus, excentrisk, ISO 2037  
 DS/ISO/SMS Welded eccentric reducer, ISO 2037

Cert.: EN 10204/3.1

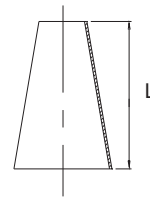
Dim. mm	L mm	Kg/ stk/pc	AISI 316L EN 1.4404 Varenr. Article no.
38,0 x 25,0 x 1,2	44,0	0,050	● 25077
51,0 x 25,0 x 1,2	86,0	0,100	● 25078
51,0 x 38,0 x 1,2	42,0	0,070	● 25079
63,5 x 38,0 x 1,2	82,0	0,120	● 25080
63,5 x 51,0 x 1,2	40,0	0,080	● 25081
76,1 x 38,0 x 1,2	109,0	0,200	● 33273
76,1 x 51,0 x 1,2	79,0	0,210	● 25082
76,1 x 63,5 x 1,5	39,0	0,110	● 25083
101,6 x 51,0 x 2,0	140,0	0,275	● 33274
101,6 x 63,5 x 2,0	102,0	0,300	● 33275
101,6 x 76,1 x 2,0	81,0	0,350	● 25084



Konus N132  
DIN Svejst konus, koncentrisk, DIN 11850  
DIN Welded concentric reducer, DIN 11850

Cert.: EN 10204/3.1

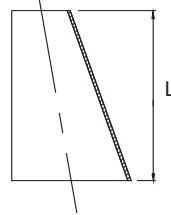
Dim. mm	DIN DN	L mm	Kg/ stk/pc	AISI 316L EN 1.4404	Varenr. Article no.
19,0 x 13,0 x 1,5	15/10	11,0	0,015	●	34148
23,0 x 19,0 x 1,5	20/15	7,0	0,015	●	34149
28,0 x 12,0 x 1,5	25/10	30,4	0,024	●	32913
29,0 x 13,0 x 1,5	25/10	28,0	0,025	●	34150
29,0 x 23,0 x 1,5	25/20	11,0	0,020	●	34151
34,0 x 28,0 x 1,5	32/25	11,2	0,020	●	32914
40,0 x 28,0 x 1,5	40/25	22,4	0,030	●	32915
41,0 x 29,0 x 1,5	40/25	22,0	0,033	●	34152
41,0 x 35,0 x 1,5	40/32	11,0	0,030	●	34172
52,0 x 40,0 x 1,5	50/40	22,6	0,050	●	32919
53,0 x 41,0 x 1,5	50/40	22,0	0,054	●	34153
70,0 x 52,0 x 2,0	65/50	31,9	0,090	●	32921
70,0 x 53,0 x 2,0	65/50	29,0	0,095	●	34154
85,0 x 52,0 x 2,0	80/50	60,4	0,110	●	32923
85,0 x 53,0 x 2,0	80/50	56,0	0,115	●	34155
104,0 x 70,0 x 2,0	100/65	63,4	0,230	●	32926
104,0 x 85,0 x 2,0	100/80	35,5	0,160	●	32927
129,0 x 104,0 x 2,0	125/100	46,7	0,254	●	32928
154,0 x 129,0 x 2,0	150/125	46,7	0,316	●	32960
204,0 x 154,0 x 2,0	200/150	90,0	1,650	●	34156



Konus N132  
 DIN Svejst konus, excentrisk, DIN 11850  
 DIN Welded eccentric reducer, DIN 11850

Cert.: EN 10204/3.1

Dim. mm	DIN DN	L mm	Kg/ stk/pc	AISI EN	316L 1.4404	Varenr. Article no.
19,0 x 13,0 x 1,5	15/10	16,5	0,030	●	34157	
23,0 x 19,0 x 1,5	20/15	11,0	0,016	●	34158	
29,0 x 13,0 x 1,5	25/10	44,0	0,045	●	34159	
29,0 x 23,0 x 1,5	25/20	16,5	0,030	●	34160	
34,0 x 28,0 x 1,5	32/25	19,0	0,040	▶	32929	
35,0 x 23,0 x 1,5	32/20	33,0	0,045	●	34173	
35,0 x 29,0 x 1,5	32/25	16,5	0,035	●	34174	
40,0 x 28,0 x 1,5	40/25	34,7	0,050	▶	32930	
40,0 x 34,0 x 1,5	40/32	18,8	0,060	▶	32931	
41,0 x 29,0 x 1,5	40/25	33,0	0,054	●	34161	
41,0 x 35,0 x 1,5	40/32	16,5	0,050	●	34175	
52,0 x 28,0 x 1,5	50/25	65,9	0,080	▶	32932	
52,0 x 34,0 x 1,5	50/32	49,5	0,110	▶	32933	
52,0 x 40,0 x 1,5	50/40	33,0	0,070	▶	32934	
53,0 x 41,0 x 1,5	50/40	33,0	0,075	●	34162	
70,0 x 40,0 x 2,0	65/40	81,8	0,170	▶	32935	
70,0 x 52,0 x 2,0	65/50	49,1	0,110	▶	32936	
70,0 x 53,0 x 2,0	65/50	44,0	0,115	●	34163	
85,0 x 40,0 x 2,0	80/40	120,9	0,250	▶	32937	
85,0 x 52,0 x 2,0	80/50	95,5	0,210	▶	32938	
85,0 x 53,0 x 2,0	80/50	85,0	0,215	●	34164	
85,0 x 70,0 x 2,0	80/65	41,2	0,140	▶	32939	
104,0 x 70,0 x 2,0	100/65	94,8	0,216	▶	32940	
104,0 x 85,0 x 2,0	100/80	49,4	0,154	▶	32941	
104,0 x 85,0 x 2,0	100/80	52,5	0,160	●	34165	
129,0 x 104,0 x 2,0	125/100	68,5	0,430	●	34166	
154,0 x 129,0 x 2,0	150/125	68,5	0,500	●	34167	
204,0 x 154,0 x 2,0	200/150	135,5	1,650	●	34168	

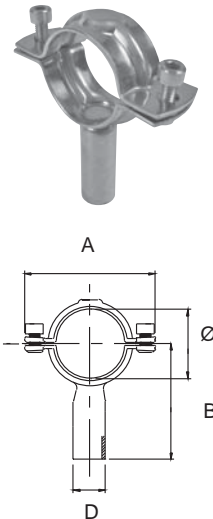


### Rørholder N134

Rørholder med skaft, med unbrako skrue, bred model, DS/SMS

Pipe support with shaft, hexagon socket cap screw, wide type, DS/SMS

Dim. mm	B mm	A mm	Ø mm	D mm	Kg/ stk/pc	AISI EN	304 1.4301
<small>Varenr. Article no.</small>							
25,0	90,0	80,0	27,0	21,3	0,260	●	32942
38,0	90,0	93,0	40,0	21,3	0,280	●	32943
51,0	90,0	103,0	53,0	21,3	0,300	●	32944
63,5	90,0	118,0	65,5	21,3	0,320	●	32945
76,1	90,0	132,0	78,0	21,3	0,340	●	32946
101,6	90,0	157,0	104,0	21,3	0,380	●	32947
25,0	150,0	80,0	27,0	21,3	0,260	●	32948
38,0	150,0	93,0	40,0	21,3	0,300	●	32949
51,0	150,0	106,0	53,0	21,3	0,300	●	32950
63,5	150,0	118,0	65,5	21,3	0,320	●	32951
76,1	150,0	132,0	78,0	21,3	0,340	●	32952
101,6	150,0	157,0	104,0	21,3	0,380	●	32953

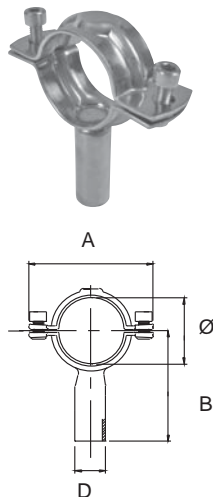


### Rørholder N114

Rørholder med svejseskæft og unbrako skrue, DIN

Pipe support with shaft, hexagon socket cap screw, DIN

Dim. mm	B mm	A mm	Ø mm	D mm	Kg/ stk/pc	AISI EN	304 1.4301
<small>Varenr. Article no.</small>							
18 - 21,0	90,0	72,0	21,0	21,3	0,209	●	20329
25 - 26,0	90,0	80,0	26,0	21,3	0,224	●	20330
29 - 31,0	90,0	80,0	31,0	21,3	0,225	●	20331
36 - 38,0	90,0	91,0	38,0	21,3	0,242	●	20332
45 - 46,0	90,0	99,0	46,0	21,3	0,256	●	20333
54 - 56,0	90,0	107,0	56,0	21,3	0,271	●	20334
70 - 71,0	90,0	123,0	71,0	21,3	0,298	●	20335
75 - 76,0	90,0	129,0	76,0	21,3	0,307	●	20336
84 - 86,0	90,0	137,0	86,0	21,3	0,323	●	20337
104 -106,0	102,0	157,0	106,0	21,3	0,368	●	20338
129 -131,0	105,0	182,0	131,0	21,3	0,420	●	20339
154 -156,0	128,0	207,0	156,0	21,3	0,479	●	20340
204 -206,0	152,0	257,0	206,0	21,3	0,533	●	20341

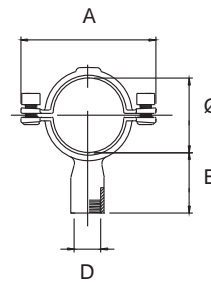


### Rørholder N134

Rørholder med skaft, med unbrako skrue, bred model, rør ende med 1/2" muffe,

Pipe support with shaft, hexagon socket cap screw wide type, tube end with 1/2" socket

Dim. mm	B mm	A mm	Ø mm	D mm	Kg/ stk/pc	AISI EN	304 1.4301
Varenr. Article no.							
25,0	45,0	80,0	27,0	23,1	0,170		● 32954
38,0	45,0	93,0	40,0	23,1	0,190		● 32955
51,0	45,0	106,0	53,0	23,1	0,220		● 32956
63,5	45,0	118,0	65,5	23,1	0,270		● 32957
76,1	45,0	132,0	78,0	23,1	0,300		● 32958
101,6	45,0	157,0	104,0	23,1	0,350		● 32959

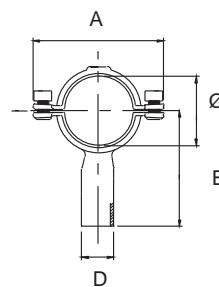


### Rørholder N134

Rørholder med skaft, med indlæg og møtrik

Pipe clips with welded shaft and plastic sleeves

Dim. mm	B mm	A mm	Ø mm	D mm	Kg/ stk/pc	AISI EN	304 1.4301
Varenr. Article no.							
25,0	90,0	80,0	27,0	20,0	0,260		● 25085
38,0	90,0	93,0	40,0	20,0	0,280		● 25086
51,0	90,0	103,0	53,0	20,0	0,300		● 25087
63,5	90,0	118,0	65,5	20,0	0,320		● 25088
76,1	90,0	132,0	78,0	20,0	0,340		● 25089
101,6	90,0	157,0	104,0	20,0	0,380		● 25090
25,0	150,0	80,0	27,0	20,0	0,260		● 25091
38,0	150,0	93,0	40,0	20,0	0,300		● 25092
51,0	150,0	106,0	53,0	20,0	0,300		● 25093
63,5	150,0	118,0	65,5	20,0	0,320		● 25094
76,1	150,0	132,0	78,0	20,0	0,340		● 25095
101,6	150,0	157,0	104,0	20,0	0,380		● 25096

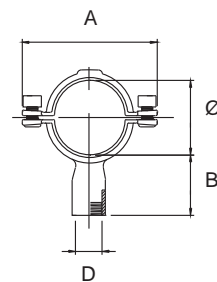


### Rørholder N134

Rørholder med skaft, med indlæg og møtrik, rør ende med 1/2" muffe,  
Pipe clips tube end with 1/2" socket and plastic sleeves

Dim. mm	B mm	A mm	Ø mm	D mm	Kg/ stk/pc	AISI 304
25,0	45,0	80,0	27,0	28,0	0,170	● 25097
38,0	45,0	93,0	40,0	28,0	0,190	● 25098
51,0	45,0	106,0	53,0	28,0	0,220	● 25099
63,5	45,0	118,0	65,5	28,0	0,270	● 25100
76,1	45,0	132,0	78,0	28,0	0,300	● 25101
101,6	45,0	157,0	104,0	28,0	0,350	● 25102

Varenr.  
Article no.

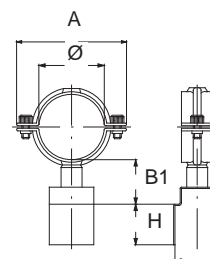


### Rørholder N134

Rørholder til 40 x 60 mm rør,  
Pipe clips for 40 x 60 mm pipe

Dim. mm	B <sub>1</sub> mm	H mm	A mm	Ø mm	Kg/ stk/pc	AISI 304 EN 1.4301
25,0	50,0	30,0	78,0	27,0	0,24	▶ 25103
38,0	50,0	30,0	91,0	40,0	0,26	▶ 25104
51,0	50,0	30,0	104,0	53,0	0,29	▶ 25105
63,5	50,0	30,0	116,0	65,5	0,32	▶ 25106

Varenr.  
Article no.



DS/ISO Svejseunion  
DS/ISO Welded union



Dim. mm	Tomme Inch	Omløber Nut	Svejsekrave Welding liner		Svejsenippel Welding male part		Pakning Seal				Blindskive Blanks	Bund m/Kæde End cap w/ chain	
			Kort/Short	Lang/Long	NBR	EPDM	Viton	Teflon	Bund/cap	Kæde/chain			
			Varenr. Article no.	Varenr. Article no.	Varenr. Article no.	Varenr. Article no.	Varenr. Article no.	Varenr. Article no.	Varenr. Article no.	Varenr. Article no.	Varenr. Article no.	Varenr. Article no.	Varenr. Article no.
25,0	1"	● 18355	● 18375	● 18365	● 18345	● 32551	● 32583	● 34424	● 18406	● 32991	● 32999		
38,0	1 ½"	● 18356	● 18376	● 18366	● 18346	● 32552	● 32584	● 34425	● 18407	● 32992	● 33000		
51,0	2"	● 18357	● 18377	● 18367	● 18347	● 32553	● 32585	● 34426	● 18408	● 32993	● 33001		
63,5	2 ½"	● 18358	● 18378	● 18368	● 18348	● 32554	● 32586	● 34427	● 18409	● 32994	● 33002		
76,1	3"	● 18359	● 18379	● 18369	● 18349	● 32555	● 32587	● 34428	● 18410	● 32995	● 33003		
101,6	4"	● 18360	● 18380	● 18370	● 18350	● 32556	● 32588	● 34429	● 18411				

Komplet union / Complete union: x x x (x) (x) (x) (x)

DS/ISO Valseunion  
DS/ISO Expanding union



Dim. mm	Tomme Inch	Omløber Nut	Valsekravestuds Expanding liner		Valsenippel Expanding male part		Pakning Seal		
			NBR	EPDM	Viton				
			Varenr. Article no.	Varenr. Article no.	Varenr. Article no.	Varenr. Article no.	Varenr. Article no.	Varenr. Article no.	
25,0	1"	● 18355	● 18412	● 18418	● 18345	● 32551	● 32583		
38,0	1 ½"	● 18356	● 18413	● 18419	● 18346	● 32552	● 32584		
51,0	2"	● 18357	● 18414	● 18420	● 18347	● 32553	● 32585		
63,5	2 ½"	● 18358	● 18415	● 18421	● 18348	● 32554	● 32586		
76,1	3"	● 18359	● 18416	● 18422	● 18349	● 32555	● 32587		
101,6	4"	● 18360	● 18417	● 18423	● 18350	● 32556	● 32588		

Komplet union / Complete union: x x x (x) (x) (x)

SMS Svejseunion  
SMS Welded union



Dim. mm	Tomme Inch.	Omløber Nut	Svejsekrave Welding liner		Svejsenippel Welding male part		Pakning Seal				Blindskive Blanks
			Kort/Short	Lang/Long	NBR	EPDM	Viton	Teflon			
			Varenr. Article no.	Varenr. Article no.	Varenr. Article no.	Varenr. Article no.	Varenr. Article no.	Varenr. Article no.	Varenr. Article no.	Varenr. Article no.	Varenr. Article no.
25,0	1"	● 27410	● 27395	● 27385	● 27401	● 27420	● 27500	● 32284	● 34430	● 27450	
38,0	1 ½"	● 27411	● 27396	● 27386	● 27402	● 27421	● 27501	● 32285	● 34431	● 27451	
51,0	2"	● 27412	● 27397	● 27387	● 27403	● 27422	● 27502	● 32286	● 34432	● 27452	
63,5	2 ½"	● 27413	● 27398	● 27388	● 27404	● 27423	● 27503	● 32287	● 34433	● 27453	
76,1	3"	● 27414	● 27399	● 27389	● 27405	● 27424	● 27504	● 32288	● 34434	● 27454	
101,6	4"	● 27415	● 27400		● 27406	● 27425	● 27505	● 32289	● 34435	● 27455	

Komplet union / Complete union: x (x) (x) x (x) (x) (x) (x)

Se følgende sider for tegninger og mål / Please see the following pages for drawings and measures



DIN Svejseunion  
DIN Welded  
union



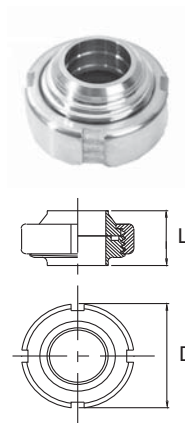
Dim. mm	DN	Omløber Nut	Svejskrave Welding liner	Svejsenippel Welding male part	Pakning Seal			Blindskive Blanks	
		Varenr. Article no.	Varenr. Article no.	Varenr. Article no.	NBR	EPDM	Viton	Teflon	Varenr. Article no.
29,0	25	● 33302	● 33296	● 33290	● 33308	● 33314	▶ 33320	● 34436	▶ 33681
41,0	40	● 33303	● 33297	● 33291	● 33309	● 33315	▶ 33321	● 34437	● 33682
53,0	50	● 33304	● 33298	● 33292	● 33310	● 33316	▶ 33322	● 34438	● 33683
70,0	65	● 33305	● 33299	● 33293	● 33311	● 33317	▶ 33323	● 34439	▶ 33684
85,0	80	● 33306	● 33300	● 33294	● 33312	● 33318	▶ 33324	● 34440	▶ 33685
104,0	100	● 33307	● 33301	● 33295	● 33313	● 33319	▶ 33325	● 34441	▶ 33686
Komplet union / Complete union:		x	x	x	(x)	(x)	(x)	(x)	

Se følgende sider for tegninger og mål / Please see the following pages for drawings and measures

Svejsunion N133  
 DS Svejsunion, komplet, ISO 2037  
 DS Welding union, complete, ISO 2037

Cert.: EN 10204/3.1

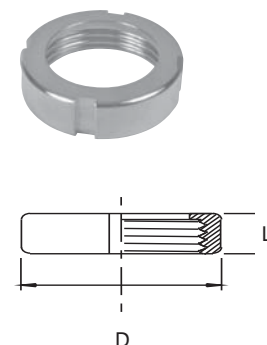
Dim. mm	L mm	D mm	Kg/ stk/pc	AISI 304 + 316L	Varenr. Article no.
25,0	36,0	57,0	0,352	●	25115
38,0	37,0	71,0	0,503	●	25116
51,0	37,0	86,0	0,724	●	25117
63,5	45,0	103,0	1,089	▶	25118
76,1	45,0	115,0	1,376	●	25119
101,6	47,0	150,0	1,975	●	25534



Omløber N133  
 DS Uniondele, omløber, ISO 2037  
 DS Union parts, nut, ISO 2037

Cert.: EN 10204/3.1

Dim. mm	L mm	D mm	Kg/ stk/pc	AISI 304 EN 1.4301	Varenr. Article no.
25,0	20,0	57,0	0,170	●	18355
38,0	20,0	71,0	0,220	●	18356
51,0	22,0	86,0	0,320	●	18357
63,5	24,0	103,0	0,460	●	18358
76,1	25,0	115,0	0,510	●	18359
101,6	28,0	150,0	1,100	●	18360



Endebund N133  
 DS/ISO Endebund og kæde, ISO 2037  
 DS/ISO End cap and chain, ISO 2037

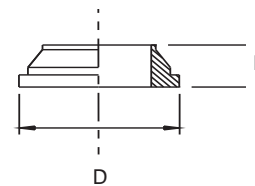
Dim. mm	Kg/ stk/pc	Endebund/End cap		Kæde/chain	
		AISI 304	AISI 304L / EN 1.4307	AISI 304	AISI 304L / EN 1.4307
		Varenr. Article no.	Varenr. Article no.	Varenr. Article no.	Varenr. Article no.
25,0	0,200	●	32991	●	32999
38,0	0,300	●	32992	●	33000
51,0	0,450	●	32993	●	33001
63,5	0,634	●	32994	●	33002
76,1	0,900	●	32995	●	33003



Svejskrave N133  
DS Uniondele, svejskrave, ISO 2037  
DS Union parts, welding liner, ISO 2037

Cert.: EN 10204/3.1

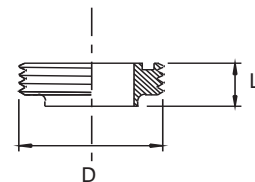
Dim. mm	L mm	D mm	Kg/ stk/pc	AISI EN	316L 1.4404	Varenr. Article no.
25,0	11,0	40,0	0,056	●	18375	
38,0	11,0	54,0	0,085	●	18376	
51,0	11,0	68,0	0,120	●	18377	
63,5	12,0	84,0	0,200	●	18378	
76,1	12,0	96,0	0,250	●	18379	
101,6	12,0	124,0	0,510	●	18380	



Svejsenippel N133  
DS Uniondele, svejsenippel, ISO 2037  
DS Union parts, welding male part, ISO 2037

Cert.: EN 10204/3.1

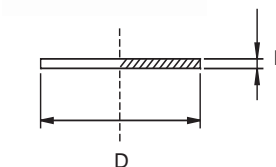
Dim. mm	L mm	D mm	Kg/ stk/pc	AISI EN	316L 1.4404	Varenr. Article no.
25,0	18,5	44,0	0,095	●	18365	
38,0	20,0	58,0	0,140	●	18366	
51,0	20,0	72,0	0,210	●	18367	
63,5	24,0	88,0	0,350	●	18368	
76,1	24,0	100,0	0,430	●	18369	
101,6	24,0	130,0	0,780	●	18370	



Blindskive N133  
DS Uniondele, blindskive, ISO 2037  
DS Union parts, blanks, ISO 2037

Cert.: EN 10204/3.1

Dim. mm	L mm	D mm	Kg/ stk/pc	AISI EN	304L 1.4307	Varenr. Article no.
25,0	3,0	40,0	0,030	●	18406	
38,0	3,0	54,0	0,052	●	18407	
51,0	3,0	68,0	0,084	●	18408	
63,5	4,0	84,0	0,104	●	18409	
76,1	4,0	96,0	0,230	●	18410	
101,6	4,0	124,0	0,376	●	18411	



Pakning N133  
DS Uniondele, pakning  
DS Union parts, seal

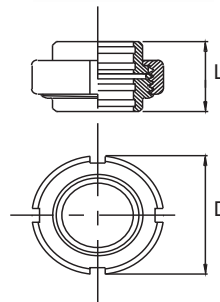
Dim. mm	Kg/ stk/pc	NBR Varenr. Article no.	EPDM Varenr. Article no.	Viton Varenr. Article no.	Teflon Varenr. Article no.
25,0	0,003	● 18345	● 32551	● 32583	● 34424
38,0	0,004	● 18346	● 32552	● 32584	● 34425
51,0	0,005	● 18347	● 32553	● 32585	● 34426
63,5	0,008	● 18348	● 32554	● 32586	● 34427
76,1	0,011	● 18349	● 32555	● 32587	● 34428
101,6	0,013	● 18350	● 32556	● 32588	● 34429



Valseunion N133  
DS Valseunion, komplet, ISO 2037  
DS Expanding union, complete, ISO 2037

Cert.: EN 10204/3.1

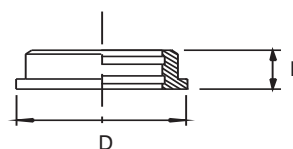
Dim. mm	L mm	D mm	Kg/ stk/pc	AISI 304 + 316L Varenr. Article no.
25,0	36,5	57,0	0,352	● 25120
38,0	40,5	71,0	0,503	● 25121
51,0	44,5	86,0	0,724	● 25122
63,5	48,5	103,0	1,089	● 25123
76,1	52,5	115,0	1,376	● 25124



Valsekravestuds N133  
DS Uniondele, valsekravestuds, ISO 2037  
DS Union parts, expanding liner, ISO 2037

Cert.: EN 10204/3.1

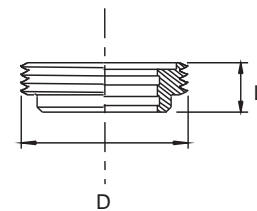
Dim. mm	L mm	D mm	Kg/ stk/pc	AISI 304 EN 1.4301 Varenr. Article no.
25,0	16,0	40,0	0,056	● 18412
38,0	18,0	54,0	0,090	● 18413
51,0	20,0	68,0	0,148	● 18414
63,5	22,0	84,0	0,232	● 18415
76,1	24,0	96,0	0,284	● 18416
101,6	29,0	123,0	0,530	● 18417



Valsenippel N133  
DS Uniondele, valsenippel, ISO 2037  
DS Union parts, expanding male part, ISO 2037

Cert.: EN 10204/3.1

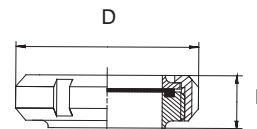
Dim. mm	L mm	D mm	Kg/ stk/pc	AISI 304	Varenr. Article no.
25,0	20,0	44,0	0,100	●	18418
38,0	22,0	58,0	0,156	●	18419
51,0	24,0	72,0	0,240	●	18420
63,5	26,0	88,0	0,364	●	18421
76,1	28,0	100,0	0,438	●	18422
101,6	34,0	130,0	0,810	▶	18423



Svejseunion N135  
SMS Svejseunion, komplet, ISO 2037  
SMS Welding union, complete, ISO 2037

Cert.: EN 10204/3.1

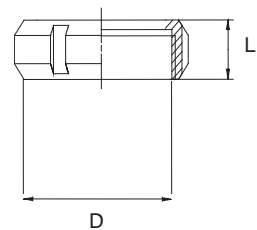
Dim. mm	L mm	D mm	Kg/ stk/pc	AISI 304 + AISI 316L	Varenr. Article no.
25,0	23,5	51,0	0,229	●	813000
38,0	30,0	74,0	0,601	●	813000
51,0	30,0	84,0	0,674	●	813000
63,5	33,0	100,0	1,087	●	813000
76,1	35,0	114,0	1,387	●	813000
101,6	48,0	154,0	3,873	●	813000



Omløber N135  
SMS Uniondele, omløber, ISO 2037  
SMS Union parts, nut, ISO 2037

Cert.: EN 10204/3.1

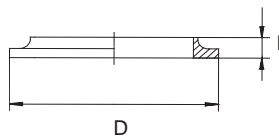
Dim. mm	L mm	D mm	Kg/ stk/pc	AISI 304 EN 1.4301	Varenr. Article no.
25,0	20,0	51,0	0,115	●	27410
38,0	25,0	74,0	0,257	●	27411
51,0	26,0	84,0	0,280	●	27412
63,5	30,0	100,0	0,430	●	27413
76,1	32,0	114,0	0,585	●	27414
101,6	45,0	154,0	1,650	●	27415



Svejsekrave N135  
 SMS Uniondele, svejsekrave, kort, ISO 2037  
 SMS Union parts, welding liner, short, ISO 2037

Cert.: EN 10204/3.1

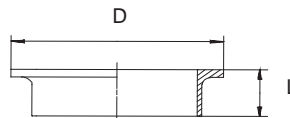
Dim. mm	L mm	D mm	Kg/ stk/pc	AISI 316L EN 1.4404	Varenr. Article no.
25,0	7,5	35,5	0,030	●	27395
38,0	9,0	55,0	0,040	●	27396
51,0	9,0	65,0	0,060	●	27397
63,5	9,0	80,0	0,100	●	27398
76,1	10,0	93,0	0,130	●	27399
101,6	12,0	127,0	0,280	●	27400



Svejsekrave N135  
 SMS Uniondele, svejsekrave, lang, ISO 2037  
 SMS Union parts, welding liner, long, ISO 2037

Cert.: EN 10204/3.1

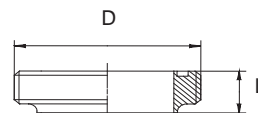
Dim. mm	L mm	D mm	Kg/ stk/pc	AISI 316L EN 1.4404	Varenr. Article no.
25,0	17,0	35,5	0,031	●	27385
38,0	20,0	55,0	0,076	●	27386
51,0	20,0	65,0	0,086	●	27387
63,5	25,0	80,0	0,153	●	27388
76,1	30,0	93,0	0,220	●	27389



Svejsenippel N135  
 SMS Uniondele, svejsenippel, ISO 2037  
 SMS Union parts, welding male part, ISO 2037

Cert.: EN 10204/3.1

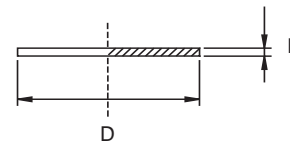
Dim. mm	L mm	D mm	Kg/ stk/pc	AISI 316L EN 1.4404	Varenr. Article no.
25,0	18,5	40,0	0,060	●	27401
38,0	20,0	60,0	0,160	●	27402
51,0	20,0	70,0	0,180	●	27403
63,5	24,0	85,0	0,340	●	27404
76,1	24,0	98,0	0,450	●	27405
101,6	35,0	132,0	1,320	●	27406



Blindskive N135  
SMS Uniondele, blindskive, ISO 2037  
SMS Union parts, blanks, ISO 2037

Cert.: EN 10204/3.1

Dim. mm	L mm	D mm	Kg/ stk/pc	AISI 316L EN 1.4404	Varenr. Article no.
25,0	3,0	35,5	0,024		● 27450
38,0	4,0	55,0	0,074		● 27451
51,0	4,0	65,0	0,104		● 27452
63,5	4,0	80,0	0,158		● 27453
76,1	5,0	93,0	0,266		● 27454
101,6	6,0	127,0	0,594		● 27455



Pakning N135  
SMS Uniondele, pakning, ISO 2037  
SMS Union parts, seal, ISO 2037

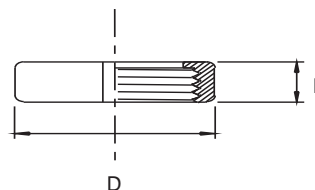
Dim. mm	Kg/ stk/pc	NBR	EPDM	Viton	Teflon
		Varenr. Article no.	Varenr. Article no.	Varenr. Article no.	Varenr. Article no.
25,0	0,003	● 27420	● 27500	● 32284	● 34430
38,0	0,004	● 27421	● 27501	● 32285	● 34431
51,0	0,005	● 27422	● 27502	● 32286	● 34432
63,5	0,008	● 27423	● 27503	● 32287	● 34433
76,1	0,011	● 27424	● 27504	● 32288	● 34434
101,6	0,013	● 27425	● 27505	● 32289	● 34435



Omløber N133  
DIN Uniondele, omløber, DIN 11850  
DIN Union parts, nut, DIN 11850

Cert.: EN 10204/3.1

Dim. mm	DN	L mm	D mm	Kg/ stk/pc	AISI 304 EN 1.4301	Varenr. Article no.
29,0	25	21,0	52,0	0,178		● 33302
41,0	40	21,0	65,0	0,245		● 33303
53,0	50	21,0	78,0	0,245		● 33304
70,0	65	25,0	95,0	0,560		● 33305
85,0	80	29,0	110,0	0,746		● 33306
104,0	100	31,0	130,0	1,008		● 33307



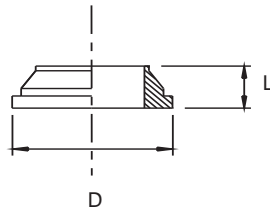
### Svejskrave N133

DIN Uniondele, svejskrave, DIN 11850

DIN Union parts, welding liner, DIN 11850

Cert.: EN 10204/3.1

Dim. mm	DN	L mm	D mm	Kg/ stk/pc	AISI 316L EN 1.4404	Varenr. Article no.
29,0	25	22,0	44,0	0,089	● 33296	● 33296
41,0	40	26,0	56,0	0,134	● 33297	● 33297
53,0	50	28,0	68,5	0,198	● 33298	● 33298
70,0	65	32,0	86,0	0,313	● 33299	● 33299
85,0	80	37,0	100,0	0,394	● 33300	● 33300
104,0	100	44,0	121,0	0,602	● 33301	● 33301



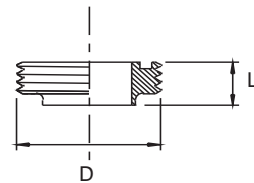
### Svejsenippel N133

DIN Uniondele, svejsenippel, DIN 11850

DIN Union parts, welding male part, DIN 11850

Cert.: EN 10204/3.1

Dim. mm	DN	L mm	D mm	Kg/ stk/pc	AISI 316L EN 1.4404	Varenr. Article no.
29,0	25	29,0	52,0	0,108	● 33290	● 33290
41,0	40	33,0	65,0	0,173	● 33291	● 33291
53,0	50	35,0	78,0	0,230	● 33292	● 33292
70,0	65	40,0	95,0	0,336	● 33293	● 33293
85,0	80	45,0	110,0	0,524	● 33294	● 33294
104,0	100	54,0	130,0	0,718	● 33295	● 33295



### Pakning N133

DIN Uniondele, pakning

DIN Union parts, seal

Dim. mm	DN	Kg/ stk/pc	NBR	EPDM	Viton	Teflon
			Varenr. Article no.	Varenr. Article no.	Varenr. Article no.	Varenr. Article no.
29,0	25	0,005	● 33308	● 33314	▶ 33320	● 34436
41,0	40	0,005	● 33309	● 33315	▶ 33321	● 34437
53,0	50	0,006	● 33310	● 33316	▶ 33322	● 34438
70,0	65	0,007	● 33311	● 33317	▶ 33323	● 34439
85,0	80	0,009	● 33312	● 33318	▶ 33324	● 34440
104,0	100	0,010	● 33313	● 33319	▶ 33325	● 34441

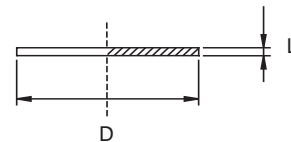




Blindskive N133  
DIN Uniondele, blindskive, DIN 11850  
DIN Union parts, blanks, DIN 11850

Cert.: EN 10204/3.1

Dim. mm	L mm	D mm	Kg/ stk/pc	AISI EN	316L 1.4404	Varenr. Article no.
29,0	22,0	44,0	0,089	▶	33681	▶ 33681
41,0	26,0	56,0	0,134	●	33682	● 33682
53,0	28,0	68,5	0,198	●	33683	● 33683
70,0	32,0	86,0	0,313	▶	33684	▶ 33684
85,0	37,0	100,0	0,394	▶	33685	▶ 33685
104,0	44,0	121,0	0,602	▶	33686	▶ 33686



## Clampoversigt Clamp survey

DS/ISO  
Clamp  
DS/ISO  
Clamp



Dim.	Tomme Inch	Spændering Clamp lock washer <small>Kraftig V-type/heavy duty</small>		Krave Clamp ferrule		Pakning Seal				Blindskeive Clamp blank
		Varenr. Article no.	Varenr. Article no.	Varenr. Article no.	Varenr. Article no.	NBR	EPDM	Viton	Teflon	
25,0	1"	● 18315	● 32625	● 18325	● 18335	● 32557	● 32577	● 34442	● 18400	
38,0	1 ½"	● 18316	● 32627	● 18326	● 18336	● 32558	● 32578	● 34443	● 18401	
51,0	2"	● 18317	● 32629	● 18327	● 18337	● 32559	● 32579	● 34444	● 18402	
63,5	2 ½"	● 18318	● 32631	● 18328	● 18338	● 32560	● 32580	● 34445	● 18403	
76,1	3"	● 18319	● 32633	● 18329	● 18339	● 32561	● 32581	● 34446	● 18404	
101,6	4"	● 18320	● 32635	● 18330	● 18340	● 32562	● 32582	● 34447	● 18405	
168,3			● 32766							

Komplet clamp /  
Complete clamp:

x (x) x (2 stk/pc) (x) (x) (x) (x)

DIN Clamp  
DIN Clamp



Dim. mm	DN	Spændering Clamp lock washer		Krave Clamp ferrule		Pakning Seal				Blindskeive Clamp blank
		Varenr. Article no.	Varenr. Article no.	Varenr. Article no.	Varenr. Article no.	NBR	EPDM	Viton	Teflon	
13,0	10	● 32622	● 32642	● 32670	● 32684	▶ 32698	● 32712	▶ 32656		
19,0	15	● 32623	● 32643	● 32671	● 32685	● 32699	▶ 32713	▶ 32657		
23,0	20	▶ 32624	● 32644	▶ 32672	● 32686	● 32670	▶ 32714	● 32658		
29,0	25	● 32626	● 32645	● 32673	● 32687	● 32701	● 32715	● 32659		
41,0	40	● 32628	● 32646	● 32674	● 32688	● 32702	● 32716	● 32660		
53,0	50	● 32630	● 32647	● 32675	● 32689	● 32703	● 32717	● 32661		
70,0	65	● 32632	● 32648	● 32676	● 32690	● 32704	● 32718	● 32662		
85,0	80	● 32634	● 32649	● 32677	● 32691	● 32705	● 32719	● 32663		
104,0	100	● 32636	● 32650	● 32678	● 32692	● 32706	● 32720	● 32664		
129,0	125	● 32637	● 32651	● 32679	● 32693	● 32707	▶ 32721	● 32665		
154,0	150	● 32638	● 32652	● 32680	● 32694	● 32708	● 32722	● 32666		
204,0	200	● 32639	● 32653	▶ 32681	● 32695	▶ 32709	▶ 32723	● 32667		
254,0	250	▶ 32640	▶ 32654	▶ 32682	● 32696	▶ 32710	▶ 32724	▶ 32668		
304,0	300	▶ 32641	● 32655	▶ 32683	● 32697	▶ 32711	▶ 32725	● 32669		

Komplet clamp /  
Complete clamp:

x (x) x (2 stk/pc) (x) (x) (x) (x)

Se følgende sider for tegninger og mål / Please see the following pages for drawings and measures

DIN Miniclamp  
DIN Miniclamp



Dim. mm	Spændering Clamp lock washer	Krave Clamp ferrule	Pakning Seal			Blindskeive Clamp blank
			EPDM	Viton	Teflon	
	Varenr. Article no.	Varenr. Article no.	Varenr. Article no.	Varenr. Article no.	Varenr. Article no.	Varenr. Article no.
6,0	● 32726	● 32727	● 32736	▶ 32744	● 32751	▶ 32735
8,0	● 32726	● 32728	● 32737	▶ 32745	▶ 32752	▶ 32735
10,0	● 32726	● 32729	● 32738	▶ 32746	● 32753	▶ 32735
12,0	● 32726	● 32730	● 32739	● 32747	● 32754	▶ 32735
14,0	● 32726	● 32731	● 32740	▶ 32748	▶ 32755	▶ 32735
16,0	● 32726	● 32732	● 32741	● 32749	▶ 32756	▶ 32735
18,0	● 32726	● 32733	● 32742	● 32750	● 32757	▶ 32735
19,0	● 32726	● 32734	● 32743			▶ 32735
<b>Komplet miniclamp / Complete clamp:</b>						
	x	x (2 stk/pc)	(x)	(x)	(x)	

Se følgende sider for tegninger og mål / Please see the following pages for drawings and measures

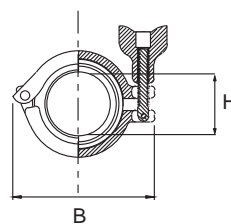
### Clampspændering N136

DS/ISO/SMS Clampspændring med fingermøtrik, ISO 2037

DS/ISO/SMS Clamp lock washer with milled nut, ISO 2037

Cert.: EN 10204/3.1

Dim. mm	B mm	H mm	Kg/ stk/pc	AISI 304	Varenr. Article no.
25,0	88,9	63,5	0,296	●	18315
38,0	88,9	63,5	0,296	●	18316
51,0	101,6	76,2	0,352	●	18317
63,5	114,3	88,9	0,390	●	18318
76,1	127,0	101,6	0,432	●	18319
101,6	160,0	132,0	0,554	●	18320



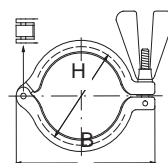
### Clampspændering N136

DS/ISO/SMS Clampspændring, med fingermøtrik, kraftig model, V-Type, ISO 2037

DS/ISO/SMS Clamp lock washer with milled nut, heavy duty, V-hedged, ISO 2037

Cert.: EN 10204/3.1

Dim. mm	ISO mm	B mm	H mm	Kg/ stk/pc	AISI 304	Varenr. Article no.
25,0	25,0	85,0	50,0	0,211	●	32625
38,0	38,0	85,0	50,0	0,211	●	32627
51,0	51,0	99,0	64,0	0,303	●	32629
63,5	63,5	112,0	77,0	0,342	●	32631
76,1	76,1	126,0	91,0	0,396	●	32633
101,6	101,6	154,0	119,0	0,534	●	32635



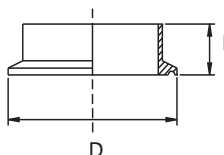
### Clampkrave N136

DS/ISO/SMS Clampkrave, ISO 2037

DS/ISO/SMS Clamp ferrule, ISO 2037

Cert.: EN 10204/3.1

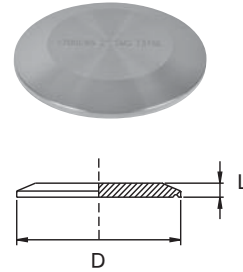
Udv./Outside dim. mm	Indv./Inside dim. mm	L mm	D mm	Kg/ stk/pc	AISI 316L EN1.4404	Varenr. Article no.
25,0	22,6	21,5	50,5	0,068	●	18325
38,0	35,6	21,5	50,5	0,068	●	18326
51,0	48,6	21,5	64,0	0,052	●	18327
63,5	60,3	21,5	77,5	0,070	●	18328
76,1	72,9	21,5	91,0	0,106	●	18329
101,6	97,6	21,5	119,0	0,128	●	18330



Clampblindskive N136  
DS/ISO/SMS Clampblindskive, ISO 2037  
DS/ISO/SMS Clamp blank, ISO 2037

Cert.: EN 10204/3.1

Dim. mm	L mm	D mm	Kg/ stk/pc	AISI 316L EN 1.4404	Varenr. Article no.
25,0	6,4	50,4	0,078		● 18400
38,0	6,4	50,4	0,078		● 18401
51,0	6,4	63,9	0,134		● 18402
63,5	6,4	77,4	0,200		● 18403
76,1	6,4	90,9	0,288		● 18404
101,6	6,4	118,9	0,510		● 18405



Clamppakning N136  
DS/ISO/SMS Clamppakning, ISO 2037  
DS/ISO/SMS Clamp seal, ISO 2037

Dim. mm	Kg/ stk/pc	NBR	EPDM	Viton	Teflon
		Varenr. Article no.	Varenr. Article no.	Varenr. Article no.	Varenr. Article no.
25,0	0,008	● 18335	● 32557	● 32577	● 34442
38,0	0,008	● 18336	● 32558	● 32578	● 34443
51,0	0,008	● 18337	● 32559	● 32579	● 34444
63,5	0,008	● 18338	● 32560	● 32580	● 34445
76,1	0,012	● 18339	● 32561	● 32581	● 34446
101,6	0,016	● 18340	● 32562	● 32582	● 34447



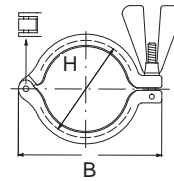
### Clampspændering N138

DIN Clampspændring med fingermøtrik, kraftig model, V-Type, DIN 11850

DIN Clamp lock washer with milled nut, heavy duty, V-hedged, DIN 11850

Cert.: EN 10204/3.1

Dim. mm	DIN DN	B mm	H mm	AISI 304	Varenr. Article no.
13,0	10	69,0	34,0	●	32622
19,0	15	69,0	34,0	●	32623
23,0	20	69,0	34,0	●	32624
29,0	25	85,0	50,0	●	32626
41,0	40	85,0	50,0	●	32628
53,0	50	99,0	64,0	●	32630
70,0	65	126,0	91,0	●	32632
85,0	80	140,0	106,0	●	32634
104,0	100	154,0	119,0	●	32636
129,0	125	194,0	147,0	●	32637
154,0	150	230,0	170,0	●	32638
204,0	200	289,0	221,0	●	32639
254,0	250	357,0	268,0	▶	32640
304,0	300	430,0	319,0	▶	32641



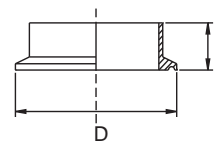
### Clampkrave N138

DIN Clampkrave, DIN 11850

DIN Clamp ferrule, DIN 11850

Cert.: EN 10204/3.1

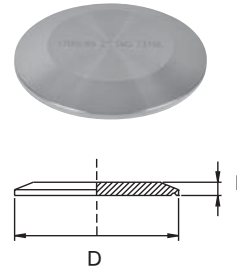
Dim. mm	DIN DN	L mm	D mm	AISI EN	316L 1.4404	Varenr. Article no.
13,0	10	18,0	34,0	●	●	32642
19,0	15	18,0	34,0	●	●	32643
23,0	20	18,0	34,0	●	●	32644
29,0	25	21,5	50,5	●	●	32645
41,0	40	21,5	50,5	●	●	32646
53,0	50	21,5	64,0	●	●	32647
70,0	65	28,0	91,0	●	●	32648
85,0	80	28,0	106,0	●	●	32649
104,0	100	28,0	119,0	●	●	32650
129,0	125	28,0	144,0	●	●	32651
154,0	150	28,0	167,0	●	●	32652
204,0	200	28,0	218,0	●	●	32653
254,0	250	28,0	268,0	▶	▶	32654
304,0	300	28,0	319,0	▶	▶	32655



Clampblindskive N138  
DIN Clampblindskive, DIN 11850  
DIN Clamp blank, DIN 11850

Cert.: EN 10204/3.1

Dim. mm	DIN DN	L mm	D mm	AISI EN	316L 1.4404	Varenr. Article no.
13,0	10	6,0	34,0			▶ 32656
19,0	15	6,0	34,0			▶ 32657
23,0	20	6,0	34,0			● 32658
29,0	25	7,0	50,5			● 32659
41,0	40	7,0	50,5			● 32660
53,0	50	7,0	64,0			● 32661
70,0	65	7,0	91,0			● 32662
85,0	80	7,0	106,0			● 32663
104,0	100	9,0	119,0			● 32664
129,0	125	10,0	144,4			● 32665
154,0	150	10,0	167,0			● 32666
204,0	200	10,0	217,4			● 32667
254,0	250	10,0	268,0			▶ 32668
304,0	300	10,0	319,0			● 32669



Clamppakning N138  
DIN Clamppakning, DIN 11850  
DIN Clamp seal, DIN 11850

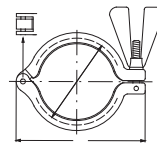
Dim. mm	DIN DN	NBR	EPDM	VITON	TEFLON
		Varenr. Article no.	Varenr. Article no.	Varenr. Article no.	Varenr. Article no.
13,0	10	● 32670	● 32684	▶ 32698	● 32712
19,0	15	● 32671	● 32685	● 32699	▶ 32713
23,0	20	▶ 32672	● 32686	● 32700	▶ 32714
29,0	25	● 32673	● 32687	● 32701	● 32715
41,0	40	● 32674	● 32688	● 32702	● 32716
53,0	50	● 32675	● 32689	● 32703	● 32717
70,0	65	● 32676	● 32690	● 32704	● 32718
85,0	80	● 32677	● 32691	● 32705	● 32719
104,0	100	● 32678	● 32692	● 32706	● 32720
129,0	125	● 32679	● 32693	● 32707	▶ 32721
154,0	150	● 32680	● 32694	● 32708	▶ 32722
204,0	200	▶ 32681	● 32695	▶ 32709	▶ 32723
254,0	250	▶ 32682	● 32696	▶ 32710	▶ 32724
304,0	300	▶ 32683	● 32697	▶ 32711	▶ 32725



Mini clampspændring N139  
 Mini clampspændring, kraftig model, DIN 11850  
 Mini clamp ring, heavy type, DIN 11850

Cert.: EN 10204/3.1

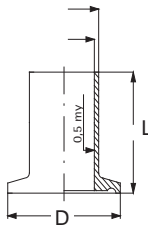
Dim. mm	AISI 304
6,0 - 19,0 mm	Varenr. Article no. ● 32726



Mini clampkrave N139  
 Mini clampkrave, DIN 11850  
 Mini clamp ferrule, DIN 11850

Cert.: EN 10204/3.1

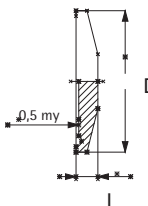
Dim. mm	L mm	D mm	AISI 316L EN 1.4404
6,0	21,5	25,4	● 32727
8,0	21,5	25,4	● 32728
10,0	21,5	25,4	● 32729
12,0	21,5	25,4	● 32730
14,0	21,5	25,4	● 32731
16,0	21,5	25,4	● 32732
18,0	21,5	25,4	● 32733
19,0	21,5	25,4	● 32734



Mini clampblindskive N139  
 Mini clampblindskive, DIN 11850  
 Mini clamp blank, DIN 11850

Cert.: EN 10204/3.1

Dim. mm	L mm	D mm	AISI 316L EN 1.4404
6,0 - 19,0 mm	5,6	25,3	● 32735





Mini clamppakning N139  
Mini clamppakning  
Mini clamp seal

Dim. mm	EPDM	Viton	TEFLON
	Varenr. Article no.	Varenr. Article no.	Varenr. Article no.
6,0	● 32736	▶ 32744	▶ 32751
8,0	● 32737	▶ 32745	▶ 32752
10,0	● 32738	▶ 32746	● 32753
12,0	● 32739	● 32747	● 32754
14,0	● 32740	▶ 32748	▶ 32755
16,0	● 32741	● 32749	▶ 32756
18,0	● 32742	● 32750	● 32757
19,0	● 32743		



Hagenøgle N137  
Hagenøgle, universal  
Spanner, universal

Cert.: EN 10204/3.1

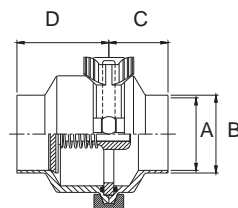
Dim. mm	Kg/ stk/pc	Varenr. Article no.
25,0 - 76,0	0,310	● 18500
101,6	0,986	● 18501



Kontraventil N160  
DS 3A-kontraventil med midterclamp og svejseender  
DS 3A-check valve, middle clamp and welding end

Cert.: EN 10204/3.1

Dim. mm	Kg/ stk./pc	A mm	B mm	C mm	D mm	AISI 316L Varenr. Article no.
25,0	1,25	22,6	25,0	38,0	59,0	● 32598
38,0	1,62	35,6	38,0	38,0	59,0	● 32599
51,0	1,93	48,6	51,0	38,0	59,0	● 32600
63,5	2,56	60,5	63,5	38,0	59,0	● 32601
76,1	2,96	72,1	76,1	38,0	59,0	● 32602
101,6	5,45	97,6	101,6	38,0	59,0	● 32603

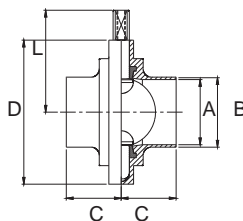


## Butterflyventil N160

DS Butterflyventil, med svejseender, EPDM pakning, uden håndtag  
DS Butterfly valve, with welding end, EPDM seal, without handle

Cert.: EN 10204/3.1

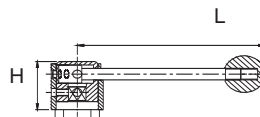
Dim. mm	Kg/ stk/pc	A mm	B mm	C mm	D mm	L mm	AISI 316L	
							Type 1	Type 2
							Varenr. Article no.	Varenr. Article no.
25,0	0,99	22,6	25,0	34,0	79,0	61,0	● 32592	● 34594
38,0	1,19	35,6	38,0	38,0	85,0	64,3	● 32593	● 34595
51,0	1,51	48,6	51,0	40,0	105,0	74,3	● 32594	● 34596
63,5	1,79	60,5	63,5	40,0	112,0	77,6	● 32595	● 34597
76,1	2,41	72,1	76,1	41,0	125,0	84,8	● 32596	● 34598
101,6	2,59	97,6	101,6	44,0	157,0	101,6	● 32597	● 34599



## Håndtag N160

Håndtag til butterflyventil, 4 positioner  
Pull handle for butterfly valve, 4 positions

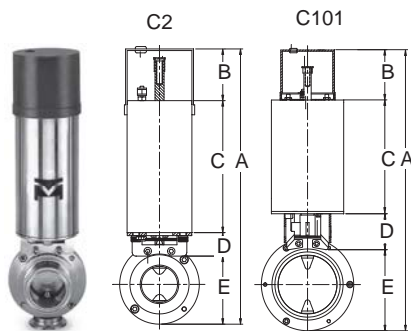
Dim. mm	Kg/ stk/pc	L mm	H mm	AISI 304	
				Type 1	Type 2
				Varenr. Article no.	Varenr. Article no.
25,0 - 76,1	0,41	135,0	42,0	● 32610	● 34600
101,6	0,41	165,0	42,0	● 32615	● 34601



## Aktuator N160

Aktuator til butterflyventil, uden kontrolboks  
Actuator for butterfly valve, without control box

Dim. mm	Kg/ stk/pc	Type	A mm	B mm	C mm	D mm	E mm	Varenr. Article no.	
								C2	C101
25,0	3,85	C2	166,0	69,5	174,0	31,0	65,4	● 32604	
38,0	3,85	C2	173,0	69,5	174,0	31,0	72,5	● 32604	
51,0	3,85	C2	192,0	69,5	174,0	31,0	91,5	● 32604	
63,0	3,85	C2	199,0	69,5	174,0	31,0	98,5	● 32604	
76,1	3,85	C2	212,0	69,5	174,0	31,0	111,5	● 32604	
101,6	4,70	C101	290,0	82,0	190,0	64,0	143,5	● 32605	



Materiale / Material:	C2	C101
Pakning / Seal:	AISI 304	AISI 304
Lukketid / Closing time:	Teflon	Teflon
Lufttryk / Air pressure:	1,5 sek.	1,7 sek.
Luftforbrug ved 5 bar / Air consumption at 5 bar:	5-9 bar	5-9 bar
	0,266 l	0,550 l