



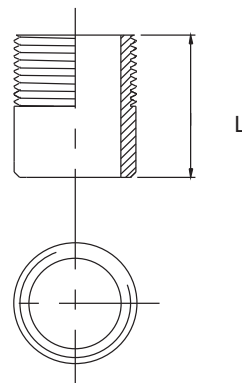
Index - Gevindfittings / Klemringsfittings / Kuglehaner

Gevindfittings / Threaded fittings	
Brystnipler / Hexagon nipples	fra side / from page 49
Bøjninger / Bends	fra side / from page 61
Kontramøtrikker / Lock nuts	fra side / from page 54
Muffer / Sockets	fra side / from page 57
Nipler / Nipples	fra side / from page 48
Nippelmuffer / Bushings	fra side / from page 52
Nippelrør / Barrel nipples	fra side / from page 44
Propper / Plugs	fra side / from page 46
Slangenipler / Hose nipples	fra side / from page 65
Slutmuffer / Round caps	fra side / from page 55
Svejsenipler / Welding nipples	fra side / from page 43
T-stykker / T-pcs	fra side / from page 62
Unioner / Unions	fra side / from page 62
Vinkler / Elbows	fra side / from page 60
Klemringsfittings / Compression fittings	
Overgangsstykker / Male connectors	fra side / from page 67
Unioner / Unions	fra side / from page 68
Vinkler / Elbows	fra side / from page 68
T-stykker / T-pcs	fra side / from page 69
Kuglehaner / Ball valves	
2-delt, gevindender / 2-piece, thread	fra side / from page 70
3-delt, gevindender / 3-piece, thread	fra side / from page 71
3-delt, svejseender / 3-pieces, but weld	fra side / from page 71

Svejsenippel N61
Svejsenippel, med konisk whitworth/BSP gevind
Welding nipple, with conical whitworth/BSP thread

Tryktrin / Pressure: 40 bar Cert.: EN 10204/3.1

Dim.	L mm	Kg/ stk/pc	AISI 316	Varenr. Article no.
1/8"	30,0	0,011	●	10004
1/4"	30,0	0,017	●	10005
3/8"	30,0	0,022	●	10006
1/2"	35,0	0,035	●	10007
1/2"	100,0	0,150	●	10008
3/4"	40,0	0,053	●	10009
3/4"	100,0	0,133	●	10010
1"	40,0	0,080	●	10011
1"	50,0	0,090	▶	11120
1"	100,0	0,200	●	10012
1"	150,0	0,300	●	10013
1 1/4"	50,0	0,120	●	10014
1 1/4"	100,0	0,240	●	10015
1 1/2"	50,0	0,140	●	10016
1 1/2"	100,0	0,280	●	10017
2"	50,0	0,206	●	10018
2"	100,0	0,412	●	10019
2 1/2"	60,0	0,270	●	10020
2 1/2"	100,0	0,480	●	10021
2 1/2"	120,0	0,576	▶	10022
3"	50,0	0,280	●	10023
3"	70,0	0,438	●	10024
4"	85,0	0,700	●	10025
4"	100,0	0,824	●	10026



Nippelrør N62

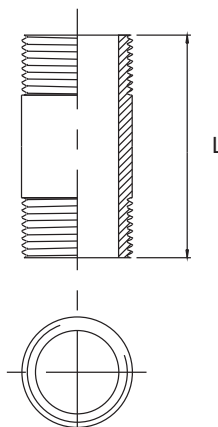
Nippelrør, med konisk whitworth/BSP gevind

Barrel nipple, with conical whitworth/BSP thread

Tryktrin / Pressure: 40 bar

Cert.: EN 10204/3.1

Dim.	L mm	Kg/ stk/pc	AISI 316	Varenr. Article no.
1/8"	25,0	0,010	●	32384
1/8"	40,0	0,016	●	10027
1/4"	30,0	0,017	●	32385
1/4"	40,0	0,023	●	10028
1/4"	50,0	0,029	●	32389
1/4"	60,0	0,034	●	10029
1/4"	80,0	0,046	●	32398
1/4"	100,0	0,057	●	32406
1/4"	120,0	0,068	●	32413
1/4"	150,0	0,086	●	32420
3/8"	40,0	0,030	●	10030
3/8"	50,0	0,04	●	32531
3/8"	60,0	0,045	●	10031
3/8"	80,0	0,060	●	32399
3/8"	100,0	0,075	●	32407
3/8"	150,0	0,113	●	32421
3/8"	180,0	0,135	●	10032
3/8"	200,0	0,150	●	32425
3/8"	250,0	0,188	▶	32430
1/2"	40,0	0,044	●	32386
1/2"	50,0	0,055	●	32391
1/2"	60,0	0,066	●	10033
1/2"	75,0	0,083	●	10034
1/2"	80,0	0,088	●	32400
1/2"	100,0	0,110	●	32408
1/2"	120,0	0,132	●	32414
1/2"	150,0	0,165	●	10035
1/2"	200,0	0,220	●	32426
3/4"	40,0	0,056	●	32387
3/4"	50,0	0,070	●	32392
3/4"	60,0	0,084	●	10036
3/4"	80,0	0,112	●	32401
3/4"	90,0	0,126	●	10037
3/4"	100,0	0,140	●	32409
3/4"	120,0	0,168	●	32415
3/4"	150,0	0,210	●	10038
3/4"	200,0	0,280	●	32427
1"	40,0	0,080	●	32388
1"	50,0	0,100	●	32393
1"	60,0	0,120	●	10039
1"	80,0	0,160	●	32402
1"	100,0	0,200	●	10040
1"	120,0	0,240	●	32416



fortsættes på næste side / continued on the next page

Nippelrør N62

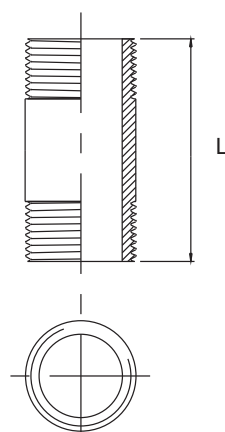
Nippelrør, med konisk whitworth/BSP gevind

Barrel nipple, with conical whitworth/BSP thread

Tryktrin / Pressure: 40 bar

Cert.: EN 10204/3.1

Dim.	L mm	Kg/ stk/pc	AISI 316	Varenr. Article no.
1"	150,0	0,300	●	10041
1"	200,0	0,400	●	32428
1 1/4"	50,0	0,135	●	32394
1 1/4"	60,0	0,162	●	32396
1 1/4"	80,0	0,216	●	10042
1 1/4"	100,0	0,270	●	32410
1 1/4"	120,0	0,324	●	32417
1 1/4"	150,0	0,405	●	10043
1 1/4"	200,0	0,540	●	10044
1 1/2"	50,0	0,150	●	32395
1 1/2"	60,0	0,180	●	32397
1 1/2"	80,0	0,240	●	10045
1 1/2"	100,0	0,300	●	32411
1 1/2"	120,0	0,360	●	32418
1 1/2"	150,0	0,450	●	10046
1 1/2"	200,0	0,600	●	10047
2"	80,0	0,400	●	32405
2"	100,0	0,500	●	10048
2"	120,0	0,600	●	32419
2"	150,0	0,750	●	32422
2"	200,0	1,000	●	10049
2 1/2"	100,0	0,500	●	10050
2 1/2"	150,0	0,750	●	32423
2 1/2"	200,0	1,000	●	10051
2 1/2"	250,0	1,250	●	32429
3"	100,0	0,625	●	32412
3"	120,0	0,750	●	10053
3"	200,0	1,250	●	10054
4"	100,0	0,900	●	10055
4"	150,0	1,350	●	32424



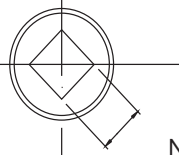
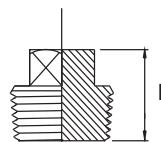
Prop N70

Prop med 4-kt. hoved, med konisk whitworth/BSP gevind
 Plug, squared, with conical whitworth/BSP thread

Tryktrin / Pressure: 40 bar

Cert.: EN 10204/3.1

Dim.	L mm	N mm	Kg/ stk/pc	AISI 316	Varenr. Article no.
1/8"	16,0	7,0	0,008	●	10057
1/4"	18,0	9,0	0,015	●	10058
3/8"	20,0	10,0	0,028	●	10059
1/2"	22,0	11,0	0,044	●	10060
3/4"	27,0	16,0	0,084	●	10061
1"	32,0	19,0	0,156	●	10062
1 1/4"	36,0	22,0	0,280	●	10063
1 1/2"	37,0	22,0	0,390	▶	10064
2"	43,0	27,0	0,664	●	10065
2 1/2"	46,0	32,0	0,700	●	10066
3"	50,0	36,0	0,850	●	10067



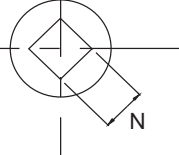
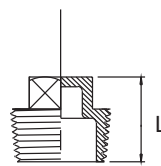
Prop N70 støbt / casted

Prop med 4-kt. hoved, med konisk whitworth/BSP gevind
 Plug, squared, with conical whitworth/BSP thread

Tryktrin / Pressure: 150 lbs / 10 bar

Cert.: EN 10204/3.1

Dim.	L mm	N mm	Kg/ stk/pc	AISI 316	Varenr. Article no.
1/8"	18,0	6,0	0,010	●	24000
1/4"	20,0	8,0	0,015	●	24001
3/8"	20,0	10,0	0,020	●	24002
1/2"	26,0	14,0	0,035	●	24003
3/4"	28,0	16,0	0,046	●	24004
1"	33,0	19,0	0,080	●	24005
1 1/4"	38,0	22,0	0,110	●	24006
1 1/2"	38,0	25,0	0,155	●	24007
2"	44,0	29,0	0,230	●	24008
2 1/2"	47,0	39,0	0,360	●	24009
3"	51,0	44,0	0,520	●	24010



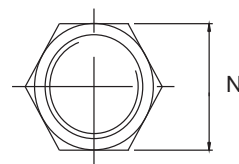
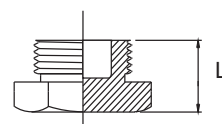
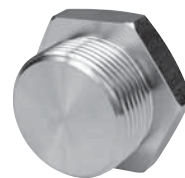
Prop N71

Prop med 6/8-kt. hoved, med cylindrisk whitworth/BSP gevind
Plug, hexagon, with cylindric whitworth/BSP thread

Tryktrin / Pressure: 40 bar

Cert.: EN 10204/3.1

Dim.	L mm	N mm		Kg/ stk/pc	AISI 316	Varenr. Article no.
1/8"	13,0	14,0	6-kt.	0,013		● 10068
1/4"	16,0	19,0	6-kt.	0,025		● 10069
3/8"	17,0	22,0	6-kt.	0,035		● 10070
1/2"	22,0	27,0	6-kt.	0,058		● 10071
3/4"	24,0	32,0	6-kt.	0,112		● 10072
1"	28,0	41,0	6-kt.	0,214		● 10073
1 1/4"	30,0	50,0	6-kt.	0,378		● 10074
1 1/2"	32,0	55,0	6-kt.	0,508		● 10075
2"	36,0	70,0	6-kt.	0,894		● 10076
2 1/2"	40,0	85,0	8-kt.	1,300		▶ 10077
3"	45,0	95,0	8-kt.	1,560		▶ 10078



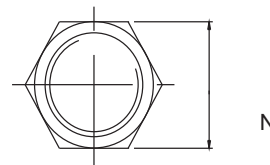
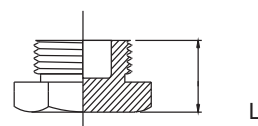
Prop N71 støbt / casted

Prop med 6/8-kt. hoved, med konisk whitworth/BSP gevind
Plug, hexagon, with conical whitworth/BSP thread

Tryktrin / Pressure: 150 lbs / 10 bar

Cert.: EN 10204/3.1

Dim.	L mm	N mm		Kg/ stk/pc	AISI 316	Varenr. Article no.
1/8"	15,5	14,5	6-kt.	0,013		● 24016
1/4"	18,0	17,0	6-kt.	0,022		● 24017
3/8"	20,0	21,0	6-kt.	0,027		● 24018
1/2"	22,0	25,0	6-kt.	0,042		● 24019
3/4"	23,5	31,0	6-kt.	0,057		● 24020
1"	27,0	37,2	6-kt.	0,090		● 24021
1 1/4"	31,0	46,0	6-kt.	0,155		● 24022
1 1/2"	31,5	51,5	6-kt.	0,200		● 24023
2"	35,0	63,5	6-kt.	0,310		● 24024
2 1/2"	43,0	79,0	8-kt.	0,575		● 24025
3"	45,0	92,5	8-kt.	0,680		● 24026



Nippel N72

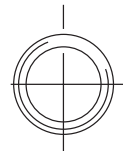
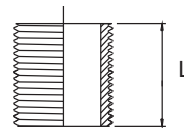
Nippel, med cylindrisk whitworth/BSP gevind

Parallel nipple, with cylindrical whitworth/BSP thread

Tryktrin / Pressure: 40 bar

Cert.: EN 10204/3.1

Dim.	L mm	Kg/ stk/pc	AISI 316	Varenr. Article no.
1/8"	16,0	0,004	●	10079
1/4"	18,0	0,008	●	10080
3/8"	22,0	0,017	●	10081
3/8"	25,0	0,020	●	32380
1/2"	25,0	0,021	●	10082
1/2"	30,0	0,030	●	32381
3/4"	30,0	0,029	●	10083
1"	30,0	0,070	▶	32382
1"	35,0	0,055	●	10084
1 1/4"	38,0	0,076	●	10085
1 1/2"	38,0	0,106	●	10086
2"	40,0	0,140	●	32383
2"	45,0	0,140	●	10087
2 1/2"	55,0	0,170	●	10088
3"	60,0	0,202	▶	10089



Nippel N72

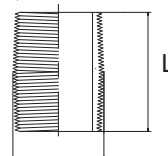
Nippel, sammenskåret, med konisk whitworth/BSP gevind

Nipple, with taper whitworth/BSP thread

Tryktrin / Pressure: 40 bar

Cert.: EN 10204/3.1

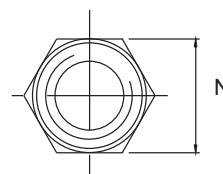
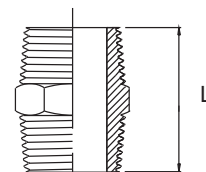
Dim.	L mm	Kg/ stk/pc	AISI 316	Varenr. Article no.
1/4"	25,0	0,015	●	32968
3/8"	25,0	0,026	●	32969
1/2"	30,0	0,042	●	32970
3/4"	30,0	0,055	●	32971
1"	30,0	0,110	●	32972
1 1/4"	40,0	0,141	●	32973
1 1/2"	40,0	0,162	●	32974
2"	40,0	0,230	●	32975



Brystnippel N73
Brystnippel, med konisk whitworth/BSP gevind
Hexagon nipple, with conical whitworth/BSP thread

Tryktrin / Pressure: 40 bar Cert.: EN 10204/3.1

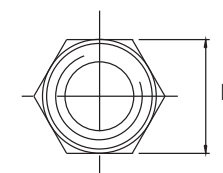
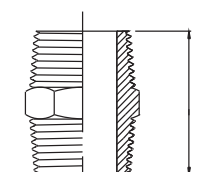
Dim.	L mm	N mm		Kg/ stk/pc	AISI 316	Varenr. Article no.
1/8"	21,0	12,0	6-kt.	0,012	●	10090
1/4"	28,0	14,0	6-kt.	0,021	●	10091
3/8"	29,0	19,0	6-kt.	0,032	●	10092
1/2"	36,0	22,0	6-kt.	0,068	●	10093
3/4"	41,0	30,0	6-kt.	0,084	●	10094
1"	46,5	36,0	6-kt.	0,138	●	10095
1 1/4"	54,0	46,0	6-kt.	0,252	●	10096
1 1/2"	54,0	50,0	6-kt.	0,272	●	10097
2"	65,5	65,0	6-kt.	0,438	●	10098
2 1/2"	76,5	80,0	8-kt.	1,095	▶	10099
3"	85,0	90,0	8-kt.	1,368	▶	10100



Brystnippel N73 støbt / casted
Brystnippel, med konisk whitworth/BSP gevind
Hexagon nipple, with conical whitworth/BSP thread

Tryktrin / Pressure: 150 lbs / 10 bar Cert.: EN 10204/3.1

Dim.	L mm	N mm		Kg/ stk/pc	AISI 316	Varenr. Article no.
1/8"	30,0	13,0	6-kt.	0,018	●	24031
1/4"	32,0	15,0	6-kt.	0,021	●	24032
3/8"	33,0	20,0	6-kt.	0,035	●	24033
1/2"	41,0	22,5	6-kt.	0,054	●	24034
3/4"	45,0	30,0	6-kt.	0,080	●	24035
1"	49,0	36,0	6-kt.	0,120	●	24036
1 1/4"	54,0	45,0	6-kt.	0,180	●	24037
1 1/2"	56,0	50,0	6-kt.	0,230	●	24038
2"	63,0	62,0	6-kt.	0,370	●	24039
2 1/2"	73,0	78,0	8-kt.	0,500	●	24040
3"	77,0	92,5	8-kt.	0,650	●	24041



Brystnippel N74

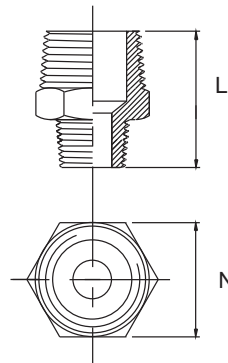
Brystnippel, reducerede, med konisk whitworth/BSP gevind

Hexagon nipple, reduced, with conical whitworth/BSP thread

Tryktrin / Pressure: 40 bar

Cert.: EN 10204/3.1

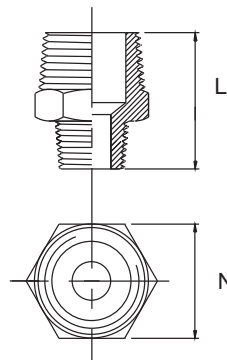
Dim.	L mm	N mm		Kg/ stk/pc	AISI 316	Varenr. Article no.
1/4" x 1/8"	25,0	14	6-kt.	0,017	●	10101
3/8" x 1/8"	28,0	19	6-kt.	0,026	▶	10102
3/8" x 1/4"	29,0	19	6-kt.	0,031	●	10103
1/2" x 1/8"	30,0	22	6-kt.	0,039	▶	10104
1/2" x 1/4"	33,0	22	6-kt.	0,051	●	10105
1/2" x 3/8"	33,5	22	6-kt.	0,056	●	10106
3/4" x 3/8"	40,5	30	6-kt.	0,082	●	10107
3/4" x 1/2"	40,5	30	6-kt.	0,094	●	10108
1" x 3/8"	40,5	36	6-kt.	0,170	▶	10109
1" x 1/2"	44,0	36	6-kt.	0,150	●	10110
1" x 3/4"	45,5	36	6-kt.	0,130	●	10111
1 1/4" x 1/2"	48,0	46	6-kt.	0,326	▶	10112
1 1/4" x 3/4"	49,5	46	6-kt.	0,300	▶	10113
1 1/4" x 1"	52,0	46	6-kt.	0,228	●	10114
1 1/2" x 1"	52,0	50	6-kt.	0,270	●	10115
1 1/2" x 1 1/4"	54,0	50	6-kt.	0,350	●	10116
2" x 1"	59,0	65	6-kt.	0,510	●	10117
2" x 1 1/4"	62,0	65	6-kt.	0,490	▶	10118
2" x 1 1/2"	62,0	65	6-kt.	0,530	●	10119



Brystnippel N74 støbt / casted
Brystnippel, reducerede, med konisk whitworth/BSP gevind
Hexagon nipple, reduced, with conical whitworth/BSP thread

Tryktrin / Pressure: 150 lbs / 10 bar Cert.: EN 10204/3.1

Dim.	L mm	N mm		Kg/ stk/pc	AISI 316	Varenr. Article no.
1/4" x 1/8"	31,0	15,5	6-kt.	0,020	●	24046
3/8" x 1/8"	34,5	19,7	6-kt.	0,035	●	24047
3/8" x 1/4"	34,5	19,7	6-kt.	0,035	●	24048
1/2" x 1/4"	36,5	23,0	6-kt.	0,052	●	24049
1/2" x 3/8"	36,5	23,0	6-kt.	0,052	●	24050
3/4" x 3/8"	41,0	28,7	6-kt.	0,085	●	24051
3/4" x 1/2"	41,0	28,7	6-kt.	0,085	●	24052
1" x 1/4"	42,0	36,0	6-kt.	0,120	▶	24061
1" x 1/2"	45,0	36,0	6-kt.	0,120	●	24053
1" x 3/4"	45,0	36,0	6-kt.	0,120	●	24054
1 1/4" x 1/2"	46,0	47,0	6-kt.	0,190	●	24055
1 1/4" x 1"	46,0	47,0	6-kt.	0,190	●	24056
1 1/2" x 1"	51,0	54,6	6-kt.	0,270	●	24057
1 1/2" x 1 1/4"	51,0	54,6	6-kt.	0,270	●	24058
2" x 1"	63,4	53,0	6-kt.	0,400	●	24059
2" x 1 1/4"	63,4	53,0	6-kt.	0,400	●	24062
2" x 1 1/2"	63,4	53,0	6-kt.	0,400	●	24060



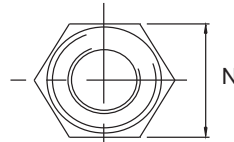
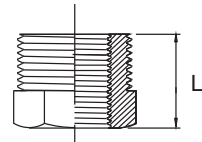
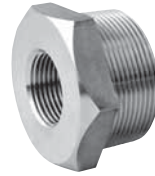
Nippelmuffe N75

Nippelmuffe, med udv. konisk/indv. cylindrisk whitworth/BSP gevind
Bushing, with outside conical/inside cylindrical whitworth/BSP thread

Tryktrin / Pressure: 40 bar

Cert.: EN 10204/3.1

Dim.	L mm	N mm		Kg/ stk/pc	AISI 316	Varenr. Article no.
1/4" x 1/8"	17,0	14,0	6-kt.	0,010	●	10120
3/8" x 1/8"	17,5	19,0	6-kt.	0,026	●	10121
3/8" x 1/4"	17,5	19,0	6-kt.	0,016	●	10122
1/2" x 1/8"	21,0	22,0	6-kt.	0,050	▶	10123
1/2" x 1/4"	21,0	22,0	6-kt.	0,039	●	10124
1/2" x 3/8"	21,0	22,0	6-kt.	0,025	●	10125
3/4" x 1/4"	24,5	30,0	6-kt.	0,092	●	10126
3/4" x 3/8"	24,5	30,0	6-kt.	0,076	●	10127
3/4" x 1/2"	24,5	30,0	6-kt.	0,054	●	10128
1" x 1/4"	27,0	36,0	6-kt.	0,142	▶	10129
1" x 3/8"	27,0	36,0	6-kt.	0,152	●	10130
1" x 1/2"	27,0	36,0	6-kt.	0,132	●	10131
1" x 3/4"	27,0	36,0	6-kt.	0,086	●	10132
1 1/4" x 1/2"	32,5	46,0	6-kt.	0,290	▶	10133
1 1/4" x 1"	32,5	46,0	6-kt.	0,142	●	10134
1 1/2" x 1"	32,5	50,0	6-kt.	0,278	●	10135
1 1/2" x 1 1/4"	32,5	50,0	6-kt.	0,144	●	10136
2" x 1"	40,0	63,0	6-kt.	0,656	●	10137
2" x 1 1/4"	40,0	63,0	6-kt.	0,508	▶	10138
2" x 1 1/2"	40,0	63,0	6-kt.	0,336	●	10139
2 1/2" x 2"	46,0	80,0	8-kt.	0,800	●	10140
3" x 2 1/2"	51,5	90,0	8-kt.	0,688	▶	10141



Nippelmuffe N75 støbt / casted

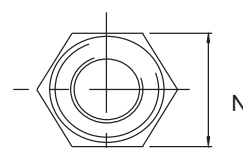
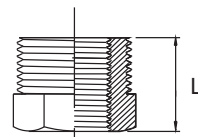
Nippelmuffe, med udv. konisk/indv. cylindrisk whitworth/BSP gevind

Bushing with outside conical/inside cylindrical whitworth/BSP thread

Tryktrin / Pressure: 150 lbs / 10 bar

Cert.: EN 10204/3.1

Dim.	L mm	N mm		Kg/ stk/pc	AISI 316	Varenr. Article no.
1/4" x 1/8"	17,0	17,0	6-kt.	0,015	●	24066
3/8" x 1/8"	18,5	21,0	6-kt.	0,020	●	24067
3/8" x 1/4"	18,5	21,0	6-kt.	0,020	●	24068
1/2" x 1/4"	21,0	26,0	6-kt.	0,040	●	24069
1/2" x 3/8"	21,0	26,0	6-kt.	0,036	●	24070
3/4" x 1/4"	24,0	30,0	6-kt.	0,620	●	24071
3/4" x 3/8"	24,0	30,0	6-kt.	0,550	●	24072
3/4" x 1/2"	24,0	30,0	6-kt.	0,550	●	24073
1" x 3/8"	27,5	38,0	6-kt.	0,100	●	24074
1" x 1/2"	27,5	38,0	6-kt.	0,080	●	24075
1" x 3/4"	27,5	38,0	6-kt.	0,080	●	24076
1 1/4" x 1/2"	30,0	46,0	6-kt.	0,180	●	24077
1 1/4" x 3/4"	30,0	46,0	6-kt.	0,100	●	24085
1 1/4" x 1"	30,0	46,0	6-kt.	0,100	●	24078
1 1/2" x 1/2"	30,5	52,0	6-kt.	0,240	●	24086
1 1/2" x 3/4"	30,5	52,0	6-kt.	0,220	●	24087
1 1/2" x 1"	30,5	52,0	6-kt.	0,200	●	24079
1 1/2" x 1 1/4"	30,5	52,0	6-kt.	0,180	●	24080
2" x 1"	33,5	63,7	6-kt.	0,370	●	24081
2" x 1 1/4"	33,5	63,7	6-kt.	0,300	●	24088
2" x 1 1/2"	33,5	63,7	6-kt.	0,370	●	24082
2 1/2" x 2"	40,0	80,0	8-kt.	0,240	●	24083
3" x 2 1/2"	43,0	94,0	8-kt.	0,600	●	24084



Kontramøtrik N77

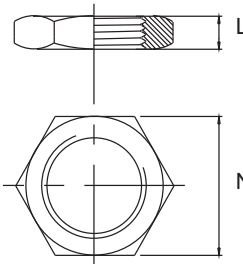
Kontramøtrik, med cylindrisk whitworth/BSP gevind

Lock nut, hexagon, with cylindrical whitworth/BSP thread

Tryktrin / Pressure: 40 bar

Cert.: EN 10204/3.1

Dim.	L mm	N mm		Kg/ stk/pc	AISI 316	Varenr. Article no.
1/8"	7,0	17,0	6-kt.	0,006	▶ 10151	▶ 10151
1/4"	8,0	22,0	6-kt.	0,012	● 10152	● 10152
3/8"	9,0	27,0	6-kt.	0,019	▶ 10153	▶ 10153
1/2"	9,0	32,0	6-kt.	0,020	● 10154	● 10154
3/4"	10,0	36,0	6-kt.	0,029	● 10155	● 10155
1"	11,0	46,0	6-kt.	0,049	▶ 10156	▶ 10156
1 1/4"	13,0	55,0	6-kt.	0,082	● 10157	● 10157
1 1/2"	13,0	60,0	6-kt.	0,134	● 10158	● 10158
2"	14,0	75,0	8-kt.	0,218	▶ 10159	▶ 10159
2 1/2"	16,0	95,0	8-kt.	0,283	▶ 10160	▶ 10160
3"	19,0	105,0	8-kt.	0,367	▶ 10161	▶ 10161



Kontramøtrik N77 støbt / casted

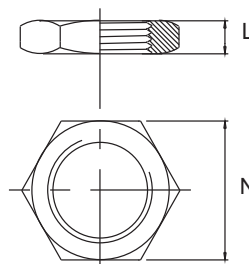
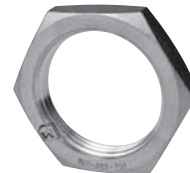
Kontramøtrik, med cylindrisk whitworth/BSP gevind

Lock nut, hexagon, with cylindrical whitworth/BSP thread

Tryktrin / Pressure: 150 lbs / 10 bar

Cert.: EN 10204/3.1

Dim.	L mm	N mm		Kg/ stk/pc	AISI 316	Varenr. Article no.
1/8"	6,5	16,0	6-kt.	0,010	● 24091	● 24091
1/4"	7,0	18,0	6-kt.	0,010	● 24092	● 24092
3/8"	7,0	24,0	6-kt.	0,020	● 24093	● 24093
1/2"	8,0	30,0	6-kt.	0,024	● 24094	● 24094
3/4"	9,0	34,5	6-kt.	0,035	● 24095	● 24095
1"	9,0	43,0	6-kt.	0,050	● 24096	● 24096
1 1/4"	11,0	52,0	6-kt.	0,085	● 24097	● 24097
1 1/2"	12,0	58,0	6-kt.	0,100	● 24098	● 24098
2"	13,0	72,0	6-kt.	0,160	● 24099	● 24099
2 1/2"	15,0	89,0	6-kt.	0,514	▶ 24100	▶ 24100
3"	17,0	102,0	6-kt.	0,360	● 24101	● 24101



Slutmuffe N79

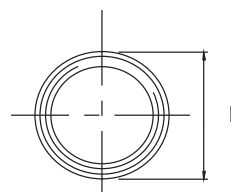
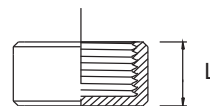
Slutmuffe, rund, med cylindrisk whitworth/BSP gevind

Round cap, with cylindrical whitworth/BSP thread

Tryktrin / Pressure: 40 bar

Cert.: EN 10204/3.1

Dim.	L mm	D mm	Kg/ stk/pc	AISI 316	Varenr. Article no.
1/8"	13,0	14,5	0,016	●	10162
1/4"	17,0	18,0	0,018	●	10163
3/8"	18,0	21,5	0,030	●	10164
1/2"	22,0	27,0	0,058	●	10165
3/4"	24,0	33,5	0,088	●	10166
1"	28,0	39,5	0,122	●	10167
1 1/4"	31,0	50,0	0,198	▶	10168
1 1/2"	31,0	57,0	0,312	●	10169
2"	37,0	69,5	0,438	▶	10170
2 1/2"	42,0	84,5	0,569	▶	10171
3"	46,0	100,0	0,740	●	10172



Slutmuffe N79 støbt / casted

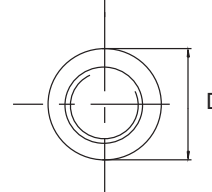
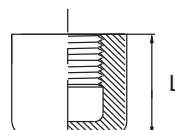
Slutmuffe, rund, med cylindrisk whitworth/BSP gevind

Round cap, with cylindrical whitworth/BSP thread

Tryktrin / Pressure: 150 lbs / 10 bar

Cert.: EN 10204/3.1

Dim.	L mm	D mm	Kg/ stk/pc	AISI 316	Varenr. Article no.
1/8"	16,0	18,0	0,020	▶	24106
1/4"	17,0	20,0	0,020	▶	24107
3/8"	18,5	23,5	0,025	▶	24108
1/2"	20,5	29,0	0,050	▶	24109
3/4"	23,0	35,0	0,065	▶	24110
1"	27,0	42,5	0,100	▶	24111
1 1/4"	27,0	52,0	0,130	▶	24112
1 1/2"	31,0	59,5	0,170	▶	24113
2"	34,0	72,0	0,240	▶	24114
2 1/2"	41,0	89,0	0,420	▶	24115
3"	42,0	102,0	0,630	▶	24116



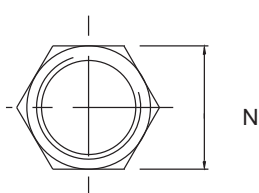
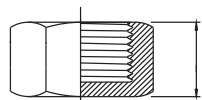
Slutmuffe N80

Slutmuffe, 6-kt. / 8-kt., med cylindrisk whitworth/BSP gevind
Hexagon cap, with cylindrical whitworth/BSP thread

Tryktrin / Pressure: 40 bar

Cert.: EN 10204/3.1

Dim.	L mm	N mm		Kg/ stk/pc	AISI 316	Varenr. Article no.
1/8"	13,0	14,0	6-kt.	0,020		▶ 10173
1/4"	17,0	19,0	6-kt.	0,026		▶ 10174
3/8"	18,0	22,0	6-kt.	0,033		● 10175
1/2"	22,0	27,0	6-kt.	0,059		● 10176
3/4"	24,0	32,0	6-kt.	0,076		● 10177
1"	28,0	41,0	6-kt.	0,144		● 10178
1 1/4"	30,0	50,0	6-kt.	0,224		● 10179
1 1/2"	31,0	55,0	6-kt.	0,250		● 10180
2"	35,0	70,0	8-kt.	0,350		● 10181
2 1/2"	40,0	85,0	8-kt.	0,460		▶ 10182
3"	45,0	95,0	8-kt.	0,501		▶ 10183



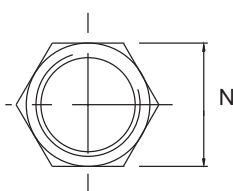
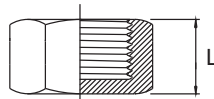
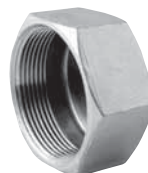
Slutmuffe N80 støbt / casted

Slutmuffe, 6-kt., med cylindrisk whitworth/BSP gevind
Hexagon cap, with cylindrical whitworth/BSP thread

Tryktrin / Pressure: 150 lbs / 10 bar

Cert.: EN 10204/3.1

Dim.	L mm	N mm		Kg/ stk/pc	AISI 316	Varenr. Article no.
1/8"	15,0	15,5	6-kt.	0,020		● 24121
1/4"	17,0	17,5	6-kt.	0,026		● 24122
3/8"	17,0	21,0	6-kt.	0,028		● 24123
1/2"	21,0	26,0	6-kt.	0,057		● 24124
3/4"	21,0	31,0	6-kt.	0,061		● 24125
1"	28,0	38,5	6-kt.	0,100		● 24126
1 1/4"	31,5	47,0	6-kt.	0,160		● 24127
1 1/2"	31,5	54,0	6-kt.	0,200		● 24128
2"	35,0	66,0	6-kt.	0,300		● 24129
2 1/2"	38,0	84,0	6-kt.	0,570		● 24130
3"	41,0	98,5	6-kt.	0,750		● 24131



Muffe N81

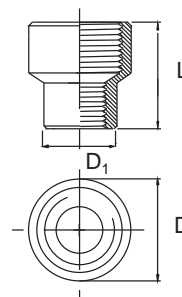
Muffe, reduceret, med cylindrisk whitworth/BSP gevind

Socket, reduced, with cylindrical whitworth/BSP thread

Tryktrin / Pressure: 40 bar

Cert.: EN 10204/3.1

Dim.	L mm	D mm	D ₁ mm	Kg/ stk/pc	AISI 316	Varenr. Article no.
1/4" x 1/8"	27,0	18,8	14,0	0,027	●	10184
3/8" x 1/4"	30,0	21,4	19,0	0,050	●	10185
1/2" x 1/4"	36,0	27,5	19,0	0,066	●	10186
1/2" x 3/8"	36,0	27,5	23,0	0,074	●	10187
3/4" x 3/8"	39,0	32,5	23,0	0,112	●	10188
3/4" x 1/2"	39,0	32,5	28,0	0,128	●	10189
1" x 1/2"	45,0	39,5	28,0	0,214	●	10190
1" x 3/4"	45,0	39,5	32,5	0,186	●	10191
1 1/4" x 1/2"	50,0	49,5	28,0	0,356	▶	10192
1 1/4" x 3/4"	50,0	49,5	32,5	0,298	●	10193
1 1/4" x 1"	50,0	49,5	39,5	0,250	●	10194
1 1/2" x 1"	55,0	54,7	39,5	0,360	▶	10195
1 1/2" x 1 1/4"	55,0	54,7	49,5	0,424	▶	10196
2" x 1"	65,0	69,5	39,5	0,586	▶	10197
2" x 1 1/2"	65,0	69,5	55,5	0,534	●	10198
2 1/2" x 2"	74,0	84,0	69,5	0,675	▶	10199
3" x 2"	80,0	99,5	69,5	0,736	▶	10200



Muffe N81 støbt / casted

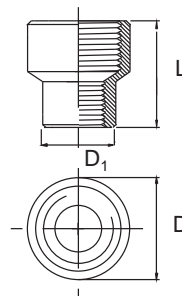
Muffe, reduceret, med cylindrisk whitworth/BSP gevind

Socket, reduced, with cylindrical whitworth/BSP thread

Tryktrin / Pressure: 150 lbs / 10 bar

Cert.: EN 10204/3.1

Dim.	L mm	D mm	D ₁ mm	Kg/ stk/pc	AISI 316	Varenr. Article no.
1/4" x 1/8"	28,0	21,0	17,0	0,033	●	24136
3/8" x 1/4"	29,0	25,0	21,0	0,047	●	24137
1/2" x 1/4"	32,0	28,0	21,0	0,068	●	24138
1/2" x 3/8"	35,0	28,0	25,0	0,068	●	24139
3/4" x 3/8"	36,0	34,0	25,0	0,095	●	24140
3/4" x 1/2"	39,0	34,0	28,0	0,095	●	24141
1" x 1/2"	41,0	42,0	28,0	0,130	●	24142
1" x 3/4"	42,0	42,3	34,4	0,130	●	24143
1 1/4" x 1/2"	43,4	51,0	20,5	0,190	●	24144
1 1/4" x 3/4"	45,0	51,0	34,4	0,190	●	24145
1 1/4" x 1"	48,5	51,0	42,5	0,190	●	24146
1 1/2" x 1"	51,0	59,0	42,3	0,260	●	24147
1 1/2" x 1 1/4"	54,0	59,0	51,0	0,260	●	24148
2" x 1 1/4"	67,5	72,5	52,5	0,400	●	24153
2" x 1 1/2"	56,5	70,7	59,0	0,400	●	24149
2 1/2" x 2"	65,5	88,0	71,5	0,750	●	24150
3" x 2"	74,5	103,5	72,5	1,150	●	24151



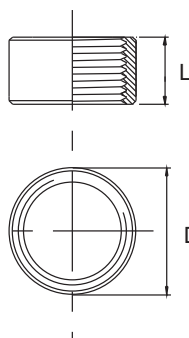
Muffe N82

Muffe, halv, med cylindrisk whitworth/BSP gevind
Half socket, with cylindrical whitworth/BSP thread

Tryktrin / Pressure: 40 bar

Cert.: EN 10204/3.1

Dim.	L mm	D mm	Kg/ stk/pc	AISI 316	Varenr. Article no.
1/8"	10,0	14,0	0,009	●	10202
1/4"	11,0	18,5	0,010	●	10203
3/8"	12,0	21,3	0,015	●	10204
1/2"	15,0	26,5	0,029	●	10205
3/4"	17,0	32,5	0,054	●	10206
1"	19,5	39,5	0,076	●	10207
1 1/4"	22,0	48,3	0,116	●	10208
1 1/2"	22,0	54,5	0,138	●	10209
2"	26,0	66,3	0,218	●	10210
2 1/2"	30,0	82,0	0,273	●	10211
3"	34,0	95,0	0,328	●	10212



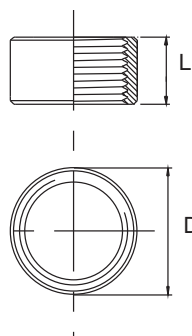
Muffe N82 støbt / casted

Muffe, halv, med cylindrisk whitworth/BSP gevind
Half socket, with cylindrical whitworth/BSP thread

Tryktrin / Pressure: 150 lbs / 10 bar

Cert.: EN 10204/3.1

Dim.	L mm	D mm	Kg/ stk/pc	AISI 316	Varenr. Article no.
1/8"	11,0	14,0	0,010	●	24156
1/4"	13,0	19,0	0,015	●	24157
3/8"	14,0	22,0	0,020	●	24158
1/2"	18,0	27,0	0,030	●	24159
3/4"	19,0	32,0	0,047	●	24160
1"	21,0	40,0	0,054	●	24161
1 1/4"	23,0	49,0	0,195	●	24162
1 1/2"	23,0	55,0	0,120	●	24163
2"	27,0	67,0	0,155	●	24164
2 1/2"	32,0	83,0	0,340	●	24165
3"	35,0	95,0	0,325	●	24166



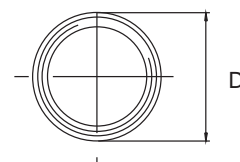
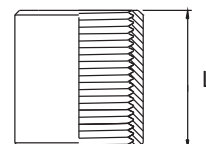
Muffe N83

Muffe, med cylindrisk whitworth/BSP gevind
Socket, with cylindrical whitworth/BSP thread

Tryktrin / Pressure: 40 bar

Cert.: EN 10204/3.1

Dim.	L mm	D mm	Kg/ stk/pc	AISI 316	Varenr. Article no.
1/8"	17,0	14,0	0,011	●	10213
1/4"	25,0	18,5	0,025	●	10214
3/8"	26,0	21,3	0,039	●	10215
1/2"	34,0	26,5	0,074	●	10216
3/4"	36,0	32,5	0,112	●	10217
1"	43,0	39,0	0,158	●	10218
1 1/4"	48,0	48,3	0,265	●	10219
1 1/2"	48,0	54,5	0,314	●	10220
2"	56,0	66,3	0,532	●	10221
2 1/2"	65,0	82,0	0,795	●	10222
3"	71,0	95,0	1,060	●	10223
4"	85,0	125,0	3,000	●	10224



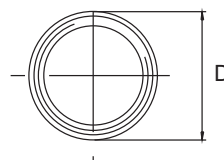
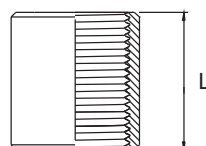
Muffe N83 støbt / casted

Muffe, med cylindrisk whitworth/BSP gevind
Socket, with cylindrical whitworth/BSP thread

Tryktrin / Pressure: 150 lbs / 10 bar

Cert.: EN 10204/3.1

Dim.	L mm	D mm	Kg/ stk/pc	AISI 316	Varenr. Article no.
1/8"	20,0	14,0	0,015	●	24171
1/4"	25,0	18,5	0,025	●	24172
3/8"	26,0	21,5	0,033	●	24173
1/2"	34,0	26,5	0,064	●	24174
3/4"	36,0	32,0	0,090	●	24175
1"	43,0	39,5	0,150	●	24176
1 1/4"	48,0	48,5	0,200	●	24177
1 1/2"	48,0	54,5	0,240	●	24178
2"	56,0	66,5	0,360	●	24179
2 1/2"	65,0	82,5	0,750	●	24180
3"	71,0	95,0	0,780	●	24181
4"	83,0	123,0	1,460	●	24182



Vinkel N84 støbt / casted

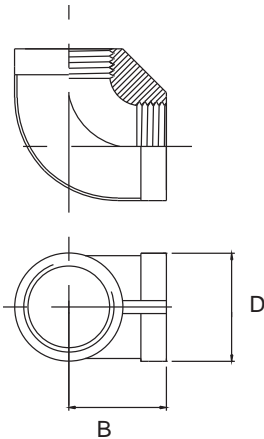
Vinkel, 90°, muffe med cylindrisk whitworth/BSP gevind

Elbow, 90° f/f with cylindrical whitworth/BSP thread

Tryktrin / Pressure: 150 lbs / 10 bar

Cert.: EN 10204/3.1

Dim.	B mm	D mm	Kg/ stk/pc	AISI 316	Varenr. Article no.
1/8"	18,0	16,0	0,020	●	10236
1/4"	19,0	19,0	0,035	●	10237
3/8"	21,5	22,5	0,042	●	10238
1/2"	27,0	29,0	0,080	●	10239
3/4"	31,0	34,0	0,100	●	10240
1"	35,0	42,0	0,180	●	10241
1 1/4"	44,0	51,0	0,250	●	10242
1 1/2"	46,5	58,5	0,300	●	10243
2"	54,5	71,0	0,500	●	10244
2 1/2"	65,0	88,0	0,870	●	10245
3"	72,0	105,0	1,230	●	10246



Vinkel N84 støbt / casted

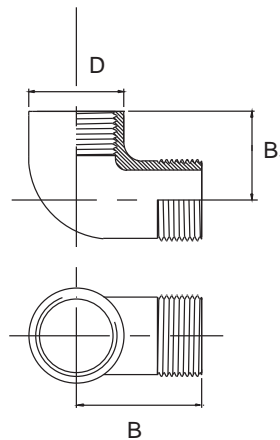
Vinkel, 90°, muffe/nippel, med udv. konisk/indv. cylindrisk whitworth/BSP gevind

Elbow, 90° m/f, with outside conical/inside cylindrical whitworth/BSP thread

Tryktrin / Pressure: 150 lbs / 10 bar

Cert.: EN 10204/3.1

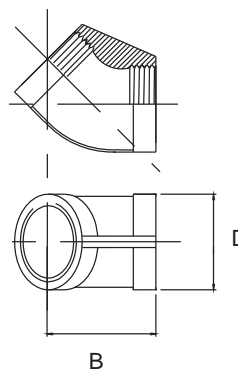
Dim.	B mm	B ₁ mm	D mm	Kg/ stk/pc	AISI 316	Varenr. Article no.
1/8"	26,5	19,0	15,0	0,021	●	24186
1/4"	30,8	21,5	18,2	0,035	●	24187
3/8"	36,5	24,5	22,5	0,045	●	24188
1/2"	41,0	29,0	28,0	0,080	●	24189
3/4"	48,0	33,5	33,5	0,125	●	24190
1"	55,5	38,0	43,0	0,205	●	24191
1 1/4"	62,0	43,0	52,0	0,355	●	24192
1 1/2"	68,0	47,0	59,0	0,420	●	24193
2"	77,5	57,5	72,0	0,600	●	24194
2 1/2"	93,0	66,0	87,0	1,445	●	24195
3"	109,0	74,0	101,0	1,530	●	24196



Vinkel N84 støbt / casted
Vinkel, 45°, med cylindrisk whitworth/BSP gevind
Elbow, 45°, with cylindrical whitworth/BSP thread

Tryktrin / Pressure: 150 lbs / 10 bar Cert.: EN 10204/3.1

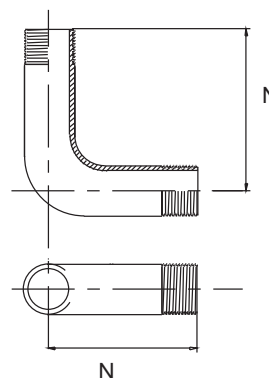
Dim.	B mm	D mm	Kg/ stk/pc	AISI 316	Varenr. Article no.
1/8"	26,0	16,0	0,035	●	24200
1/4"	28,0	19,0	0,035	●	24201
3/8"	31,0	22,5	0,045	●	24202
1/2"	35,0	29,0	0,080	●	24203
3/4"	41,0	34,0	0,125	●	24204
1"	48,0	42,0	0,200	●	24205
1 1/4"	55,0	52,0	0,300	●	24206
1 1/2"	60,0	59,0	0,380	●	24207
2"	68,0	72,0	0,570	●	24208
2 1/2"	89,0	89,5	1,020	▶	24209
3"	103,0	104,5	1,080	●	24210



Bøjning N85 U
Bøjning 90°, med konisk whitworth/BSP gevind
Bend, 90°, with conical whitworth/BSP thread

Tryktrin / Pressure: 40 bar Cert.: EN 10204/3.1

Dim. mm	N stk/pc	Kg/	AISI 316	Varenr. Article no.
1/8"	50,0	0,050	●	10258
1/4"	60,0	0,084	●	10259
3/8"	70,0	0,136	●	10260
1/2"	80,0	0,238	●	10261
3/4"	100,0	0,382	●	10262
1"	120,0	0,632	●	10263
1 1/4"	140,0	0,694	▶	10264
1 1/2"	160,0	1,210	▶	10265
2"	190,0	2,020	▶	10266
2 1/2"	240,0	2,000	▶	10267
3"	290,0	2,310	▶	10268



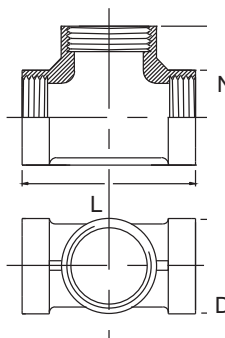
T-stykke N86 støbt / casted

T-stykke, med cylindrisk whitworth/BSP gevind

T-pcs, with cylindrical whitworth/BSP thread

Tryktrin / Pressure: 150 lbs / 10 bar Cert.: EN 10204/3.1

Dim.	L mm	N mm	D mm	Kg/ stk/pc	AISI 316	Varenr. Article no.
1/8"	30,5	18,0	16,0	0,037	●	10280
1/4"	39,0	20,0	19,0	0,048	●	10281
3/8"	46,0	23,5	22,5	0,063	●	10282
1/2"	56,0	28,0	29,0	0,110	●	10283
3/4"	65,0	32,0	34,0	0,140	●	10284
1"	72,0	36,0	41,5	0,240	●	10285
1 1/4"	92,0	47,0	52,0	0,350	●	10286
1 1/2"	97,0	48,5	59,0	0,430	●	10287
2"	115,0	57,0	72,0	0,620	●	10288
2 1/2"	131,0	66,0	88,0	1,200	●	10289
3"	146,5	74,0	105,0	1,600	●	10290



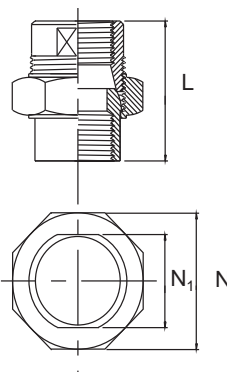
Union N97

Union, konisk tætning, gevindender med cylindrisk whitworth/BSP gevind

Union f/f, taper faces, ends with cylindrical whitworth/BSP thread

Tryktrin / Pressure: 40 bar Cert.: EN 10204/3.1

Dim.	L mm	N mm	N ₁ mm	Kg/ stk/pc	AISI 316	Varenr. Article no.
1/8"	32,0	19,0	6-kt.	14,0	0,074	▶ 10299
1/4"	38,0	27,0	6-kt.	21,0	0,084	▶ 10300
3/8"	41,0	32,0	6-kt.	24,0	0,126	▶ 10301
1/2"	46,0	36,0	6-kt.	26,0	0,224	● 10302
3/4"	50,0	46,0	6-kt.	32,0	0,368	● 10303
1"	55,0	50,0	6-kt.	41,0	0,458	● 10304
1 1/4"	62,0	60,0	6-kt.	48,0	0,626	● 10305
1 1/2"	64,0	65,0	6-kt.	53,0	0,892	▶ 10306
2"	67,0	83,0	6-kt.	70,0	1,300	● 10307
2 1/2"	70,0	100,0	8-kt.	85,0	1,625	▶ 10308
3"	75,0	115,0	8-kt.	100,0	1,956	▶ 10309



Union N97 støbt / casted

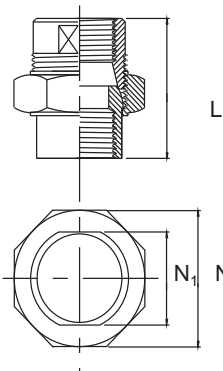
Union, konisk tætning, med cylindrisk whitworth/BSP gevind

Union f/f taper faces, with cylindrical whitworth/BSP thread

Tryktrin / Pressure: 150 lbs / 10 bar

Cert.: EN 10204/3.1

Dim.	L mm	N mm		N ₁ mm	Kg/ stk/pc	AISI 316	Varenr. Article no.
1/8"	36,5	28,5	6-kt.	18,0	0,085	●	24216
1/4"	34,5	29,5	6-kt.	18,0	0,080	●	24217
3/8"	38,0	34,5	6-kt.	21,5	0,120	●	24218
1/2"	40,5	39,0	8-kt.	26,5	0,150	●	24219
3/4"	45,0	45,8	8-kt.	31,0	0,200	●	24220
1"	51,0	55,0	8-kt.	38,0	0,290	●	24221
1 1/4"	55,0	65,5	10-kt.	48,5	0,420	●	24222
1 1/2"	59,0	74,0	10-kt.	54,5	0,520	●	24223
2"	64,0	86,0	10-kt.	66,8	0,795	●	24224
2 1/2"	71,0	106,0	10-kt.	83,0	1,300	●	24225
3"	84,0	124,0	10-kt.	97,0	1,900	●	24226



Union N97 U

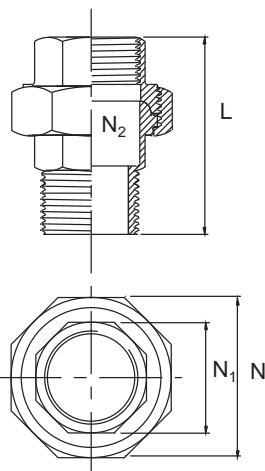
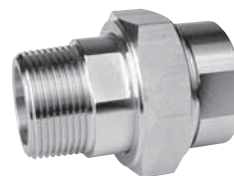
Tipunion, konisk tætning, med udv. konisk/indv. cylindrisk whitworth/BSP gevind

Union f/m, taper faces, with outside conical/inside cylindrical whitworth/BSP thread

Tryktrin / Pressure: 40 bar

Cert.: EN 10204/3.1

Dim.	L mm	N mm		N ₁ mm	N ₂ mm	Kg/ stk/pc	AISI 316	Varenr. Article no.
1/8"	40,0	19,0	6-kt.	14,0	11,0	0,082	▶	10310
1/4"	46,0	27,0	6-kt.	21,0	15,0	0,100	▶	10311
3/8"	53,0	32,0	6-kt.	24,0	19,0	0,150	●	10312
1/2"	61,0	36,0	6-kt.	26,0	22,0	0,266	●	10313
3/4"	66,0	46,0	6-kt.	32,0	28,0	0,440	●	10314
1"	75,0	50,0	6-kt.	41,0	35,0	0,576	●	10315
1 1/4"	81,0	60,0	6-kt.	48,0	43,0	0,944	●	10316
1 1/2"	85,0	65,0	6-kt.	53,0	49,0	1,070	●	10317
2"	87,0	83,0	6-kt.	70,0	60,0	1,380	●	10318
2 1/2"	97,0	100,0	8-kt.	85,0	76,0	1,725	●	10319
3"	109,0	115,0	8-kt.	100,0	89,0	2,105	▶	10320



Union N97 U støbt / casted

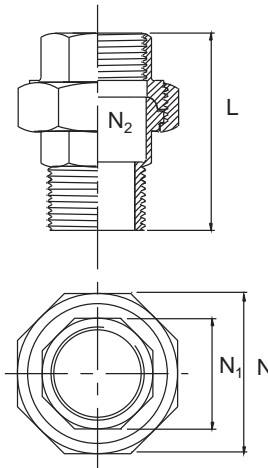
Tipunion, konisk tætning, med udv. konisk/indv. cylindrisk whitworth/BSP gevind

Union f/m taper faces, with outside conical/inside cylindrical whitworth/BSP thread

Tryktrin / Pressure: 150 lbs / 10 bar

Cert.: EN 10204/3.1

Dim.	L mm	N mm		N ₁ mm	Kg/ stk/pc	AISI 316	Varenr. Article no.
1/8"	51,0	28,5	6-kt.	18,0	0,090	●	24246
1/4"	51,0	28,5	6-kt.	18,0	0,090	●	24247
3/8"	53,0	34,5	6-kt.	21,5	0,127	●	24248
1/2"	53,0	40,0	8-kt.	26,5	0,170	●	24249
3/4"	60,0	46,0	8-kt.	31,0	0,230	●	24250
1"	66,0	55,0	8-kt.	38,0	0,340	●	24251
1 1/4"	74,0	65,5	10-kt.	48,5	0,480	●	24252
1 1/2"	76,0	74,0	10-kt.	54,5	0,600	●	24253
2"	83,0	86,0	10-kt.	66,8	1,015	●	24254
2 1/2"	92,0	106,0	10-kt.	83,0	1,420	●	24255
3"	104,0	124,0	10-kt.	97,0	2,010	●	24256



Union N97 S

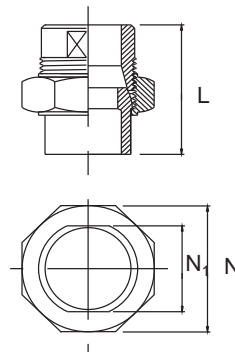
Union, svejseender, konisk tætning

Union for welding, taper faces

Tryktrin / Pressure: 40 bar

Cert.: EN 10204/3.1

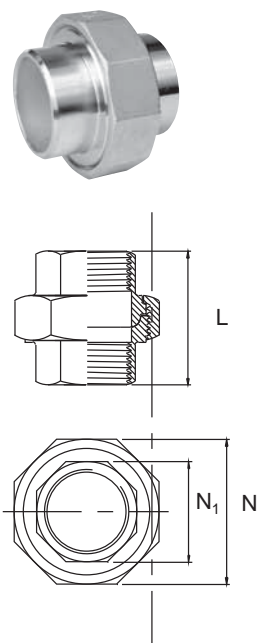
Dim.	L mm	N mm		N ₁ mm	Kg/ stk/pc	AISI 316	Varenr. Article no.
3/8" - 17,2 x 2,35	40,0	32,0	6-kt.	21,0	0,150	●	10321
1/2" - 21,3 x 2,65	40,0	36,0	6-kt.	23,0	0,266	●	10322
3/4" - 26,9 x 2,65	44,0	46,0	6-kt.	30,0	0,440	●	10323
1" - 33,7 x 3,25	52,0	50,0	6-kt.	38,0	0,576	●	10324
1 1/4" - 42,4 x 3,25	57,0	60,0	6-kt.	45,0	0,530	●	10325
1 1/2" - 48,3 x 3,25	63,0	65,0	6-kt.	50,0	1,070	●	10326
2" - 60,3 x 3,65	72,0	83,0	6-kt.	66,0	1,380	●	10327
2 1/2" - 76,1 x 3,65	80,0	100,0	8-kt.	82,0	1,725	●	10328
3" - 88,9 x 4,05	90,0	115,0	8-kt.	97,0	2,070	▶	10329



Union N97 S støbt / casted
Union, svejseender, konisk tætning
Union for welding, taper faces

Tryktrin / Pressure: 150 lbs / 10 bar Cert.: EN 10204/3.1

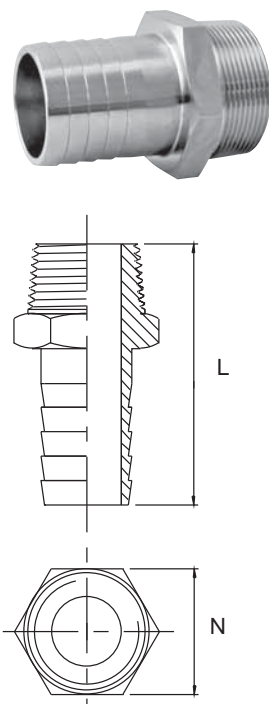
Dim.	L mm	N mm	N ₁ mm	Kg/ stk/pc	AISI 316	Varenr. Article no.
3/8" - 17,2 x 2,3	38,0	34,5	6-kt.	17,3	0,078	● 24281
1/2" - 21,3 x 2,6	40,0	39,0	8-kt.	21,6	0,078	● 24282
3/4" - 26,9 x 2,6	47,5	46,0	8-kt.	27,1	0,112	● 24283
1" - 33,7 x 3,2	49,5	55,0	8-kt.	33,8	0,147	● 24284
1 1/4" - 42,4 x 3,2	54,0	65,5	10-kt.	42,8	0,210	● 24285
1 1/2" - 48,3 x 3,2	57,0	74,0	10-kt.	48,6	0,306	● 24286
2" - 60,3 x 3,6	59,0	86,0	10-kt.	60,6	0,455	● 24287
2 1/2" - 76,1 x 3,6	69,5	106,0	10-kt.	76,3	0,590	▶ 24288
3" - 88,9 x 4,0	81,5	124,0	10-kt.	89,1	0,885	▶ 24239



Slangenippel N106
Slangenippel, med konisk whitworth/BSP gevind
Hose nipple, with conical whitworth/BSP thread

Tryktrin / Pressure: 40 bar Cert.: EN 10204/3.1

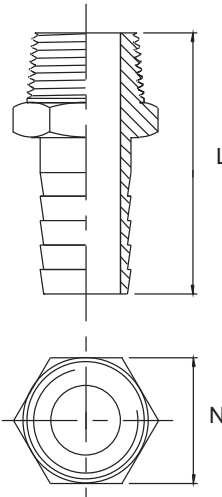
Dim.	L mm	N mm	Kg/ stk/pc	AISI 316	Varenr. Article no.
1/8" / 6,5 mm	36,0	14,0	6-kt.	0,018	● 10364
1/4" / 6,5 mm	40,0	14,0	6-kt.	0,018	● 10365
1/4" / 8,0 mm	40,0	14,0	6-kt.	0,018	● 10366
1/4" / 11,0 mm	40,0	14,0	6-kt.	0,018	● 10367
3/8" / 11,0 mm	42,0	19,0	6-kt.	0,034	● 10368
1/2" / 14,0 mm	48,0	22,0	6-kt.	0,056	● 10369
1/2" / 17,0 mm	48,0	22,0	6-kt.	0,060	● 10370
3/4" / 20,0 mm	56,0	30,0	6-kt.	0,110	● 10371
1" / 26,0 mm	65,0	36,0	6-kt.	0,186	● 10372
1 1/4" / 33,0 mm	75,0	46,0	6-kt.	0,320	▶ 10373
1 1/2" / 39,0 mm	78,0	50,0	6-kt.	0,320	● 10374
2" / 51,0 mm	96,0	65,0	6-kt.	0,500	▶ 10375
2 1/2" / 63,0 mm	104,0	80,0	8-kt.	0,720	▶ 10376
3" / 76,0 mm	115,0	95,0	8-kt.	0,860	● 10377



Slangenippel N106 støbt / casted
 Slangenippel, med konisk whitworth/BSP gevind
 Hose nipple, with conical whitworth/BSP thread

Tryktrin / Pressure: 150 lbs / 10 bar Cert.: EN 10204/3.1

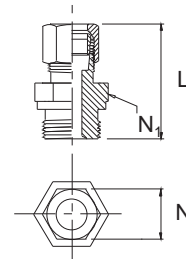
Dim.	L mm	N mm		Kg/ stk/pc	AISI 316	Varenr. Article no.
1/8" / 6,5 mm	46,0	15,0	6-kt.	0,021		▶ 24261
1/4" / 6,5 mm	46,0	15,0	6-kt.	0,021		▶ 24262
1/4" / 8,0 mm	46,0	15,0	6-kt.	0,021		▶ 24263
1/4" / 11,0 mm	46,0	15,0	6-kt.	0,021	●	24264
3/8" / 11,0 mm	53,0	19,0	6-kt.	0,033	●	24265
1/2" / 14,0 mm	56,0	23,0	6-kt.	0,060	●	24266
1/2" / 17,0 mm	56,0	23,0	6-kt.	0,060	●	24267
3/4" / 20,0 mm	60,0	29,0	6-kt.	0,075	●	24268
1" / 26,0 mm	69,0	35,0	6-kt.	0,155	●	24269
1 1/4" / 33,0 mm	70,0	45,0	6-kt.	0,230	●	24270
1 1/2" / 39,0 mm	80,0	51,0	6-kt.	0,330	●	24271
2" / 51,0 mm	88,0	62,0	6-kt.	0,500	●	24272
3" / 76,0 mm	110,0	91,5	6-kt.	1,100	●	24273



Overgangsstykke N98 DL
Overgangsstykke, DIN 2353
Male connector, DIN 2353

Arbejdstryk ved 20° C: 250 bar for 6-15 mm, 160 bar for 18-22 mm
Working pressure at 20° C: 250 bar for 6-15 mm, 160 bar for 18-22 mm

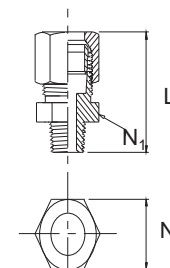
Dim.	L mm	N mm	N ₁ mm	Kg/ stk/pc	EN 1.4571	Varenr. Article no.
6,0 mm 1/8"	31,0	14,0	14,0	0,020	▶	10378
6,0 mm 1/4"	39,0	19,0	14,0	0,030	●	10379
6,0 mm 3/8"	39,0	22,0	14,0	0,048	▶	10380
8,0 mm 1/4"	37,0	19,0	17,0	0,031	●	10381
10,0 mm 1/4"	38,0	19,0	19,0	0,050	●	10382
10,0 mm 3/8"	39,0	22,0	19,0	0,070	●	10383
10,2 mm 1/4"	38,0	19,0	19,0	0,050	▶	10384
10,2 mm 3/8"	39,0	22,0	19,0	0,064	▶	10385
12,0 mm 1/4"	39,0	19,0	22,0	0,086	▶	10386
12,0 mm 3/8"	39,0	22,0	22,0	0,088	●	10387
12,0 mm 1/2"	42,0	27,0	22,0	0,100	●	10388
15,0 mm 1/4"	44,0	24,0	27,0	0,095	●	10391
15,0 mm 3/8"	44,0	24,0	27,0	0,096	▶	10392
15,0 mm 1/2"	43,0	27,0	27,0	0,104	●	10393
18,0 mm 1/2"	45,0	27,0	32,0	0,106	▶	10396
20,0 mm 1/2"	47,0	27,0	34,0	0,124	▶	10397
20,0 mm 3/4"	48,0	32,0	34,0	0,144	▶	10398
22,0 mm 3/4"	49,0	32,0	36,0	0,144	▶	10399



Overgangsstykke N98 BL
Overgangsstykke, DIN 2353
Male connector, DIN 2353

Arbejdstryk ved 20° C: 250 bar for 6-15 mm, 160 bar for 18-22 mm
Working pressure at 20° C: 250 bar for 6-15 mm, 160 bar for 18-22 mm

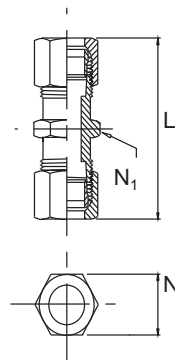
Dim.	L mm	N mm	N ₁ mm	Kg/ stk/pc	EN 1.4571	Varenr. Article no.
6,0 mm 1/4"	38,0	14,0	14,0	0,030	▶	10400
8,0 mm 1/4"	38,0	17,0	17,0	0,031	●	11038
8,0 mm 1/2"	44,0	22,0	17,0	0,031	▶	10440
10,0 mm 3/8"	40,0	19,0	19,0	0,070	▶	10401
12,0 mm 3/8"	40,0	19,0	22,0	0,088	▶	10402
12,0 mm 1/2"	45,0	22,0	22,0	0,100	▶	10403
15,0 mm 1/4"	42,0	24,0	27,0	0,095	▶	10404
15,0 mm 1/2"	46,0	24,0	27,0	0,104	▶	10500
18,0 mm 1/2"	48,0	27,0	32,0	0,150	▶	10405
22,0 mm 3/4"	50,0	32,0	36,0	0,144	▶	10406



Union N99
 Union, DIN 2353
 Equal union, DIN 2353

Arbejdstryk ved 20° C: 250 bar for 6-15 mm, 160 bar for 18-22 mm
 Working pressure at 20° C: 250 bar for 6-15 mm, 160 bar for 18-22 mm

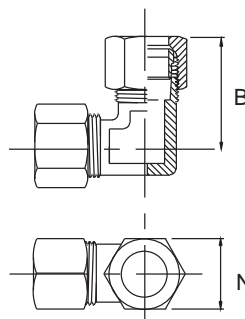
Dim.	L mm	N mm	N ₁ mm	Kg/ stk/pc	EN	1.4571 Varenr. Article no.
6,0	39,0	12,0	14,0	0,040	●	10407
8,0	40,0	14,0	17,0	0,049	●	10408
10,0	42,0	17,0	19,0	0,074	●	10409
10,2	42,0	17,0	19,0	0,094	▶	10410
12,0	43,0	19,0	22,0	0,132	●	10411
15,0	46,0	24,0	27,0	0,142	●	10413
18,0	48,0	27,0	32,0	0,220	●	10415
20,0	50,0	29,0	34,0	0,200	▶	10416
22,0	52,0	32,0	36,0	0,220	▶	10417



Vinkel N109
 Vinkel, DIN 2353
 Elbow, DIN 2353

Arbejdstryk ved 20° C: 250 bar for 6-15 mm, 160 bar for 18-22 mm
 Working pressure at 20° C: 250 bar for 6-15 mm, 160 bar for 18-22 mm

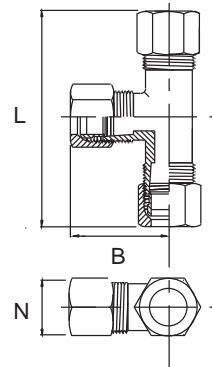
Dim. mm	B mm	N mm	Kg/ stk/pc	EN	1.4571 Varenr. Article no.
6,0	27,0	14,0	0,050	●	10418
8,0	29,0	17,0	0,070	●	10419
10,0	30,0	19,0	0,100	●	10420
10,2	30,0	19,0	0,100	▶	10421
12,0	32,0	22,0	0,170	●	10422
15,0	36,0	27,0	0,205	●	10424
18,0	40,0	32,0	0,310	▶	10426
20,0	42,0	34,0	0,320	▶	10427
22,0	44,0	36,0	0,330	●	10428



T-stykke N110
T-stykke, DIN 2353
T-pcs., DIN 2353

Arbejdstryk ved 20° C: 250 bar for 6-15 mm, 160 bar for 18-22 mm
Working pressure at 20° C: 250 bar for 6-15 mm, 160 bar for 18-22 mm

Dim. mm	L mm	B mm	N mm	Kg/ stk/pc	EN 1.4571	Varenr. Article no.
6,0	54,0	27,0	14,0	0,050	●	10429
8,0	58,0	29,0	17,0	0,075	●	10430
10,0	60,0	30,0	19,0	0,110	●	10431
10,2	60,0	30,0	19,0	0,110	▶	10432
12,0	64,0	32,0	22,0	0,190	●	10433
15,0	72,0	36,0	27,0	0,225	▶	10435
18,0	80,0	40,0	32,0	0,320	▶	10437
20,0	84,0	42,0	34,0	0,330	▶	10438
22,0	88,0	44,0	36,0	0,350	▶	10439



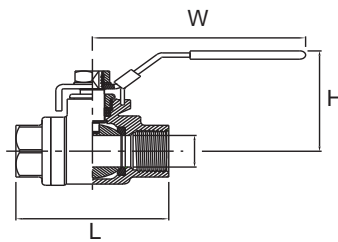
Kuglehane N150

Kuglehane 2006S, 2-delt, gevindender, fuldt gennemløb, PTFE pakning

Ball valves 2006S, thread ends, 2-piece, full bore, PTFE seal

Cert.: EN 10204/3.1

Dim. mm	L mm	H mm	W mm	Kg/ stk/pc	AISI 316	Varenr. Article no.
1/4"	50,8	58,5	100,0	0,20	●	29040
3/8"	50,8	58,5	100,0	0,20	●	29041
1/2"	58,0	58,5	100,0	0,30	●	29042
3/4"	65,6	63,5	125,0	0,50	●	29043
1"	78,7	78,0	149,0	0,80	●	29044
1 1/4"	90,0	83,0	149,0	1,10	●	29045
1 1/2"	105,0	102,0	190,0	1,80	●	29046
2"	124,0	108,0	190,0	2,70	●	29047



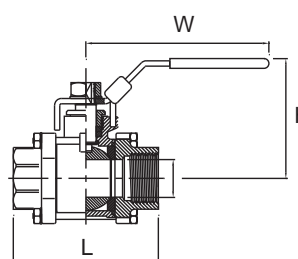
Kuglehaner N151

Kuglehaner 2013, 3-delt, gevindender, fuldt gennemløb, PTFE pakning

Ball valves 2013, thread ends, 3-pieces, full bore, PTFE seal

Cert.: EN 10204/3.1

Dim. mm	L mm	H mm	W mm	Kg/ stk/pc	AISI 316	Varenr. Article no.
1/4"	65,0	58,5	100,0	0,35	●	29051
3/8"	65,0	58,5	100,0	0,35	●	29052
1/2"	65,0	62,0	100,0	0,50	●	29053
3/4"	75,0	62,0	125,0	0,70	●	29054
1"	85,0	77,0	149,0	1,00	●	29055
1 1/4"	101,0	82,0	149,0	1,60	●	29056
1 1/2"	112,0	100,0	190,0	2,50	●	29057
2"	130,0	108,0	190,0	3,50	●	29058



Kuglehaner N152

Kuglehaner 2012, 3-delt, svejseender, fuldt gennemløb, PTFE pakninger

Ball valves 2012, but weld, 3-pieces, full bore, PTFE seals

Cert.: EN 10204/3.1

Dim. mm	L mm	H mm	W mm	Kg/ stk/pc	AISI 316	Varenr. Article no.
13,5	65,0	58,5	100,0	0,35	▶	29062
17,2	65,0	58,5	100,0	0,35	●	29063
21,3	65,0	62,0	100,0	0,50	●	29064
26,9	75,0	62,0	125,0	0,70	●	29065
33,7	85,0	77,0	149,0	1,00	●	29066
42,4	101,0	82,0	149,0	1,60	●	29067
48,3	112,0	100,0	190,0	2,50	●	29068
60,3	130,0	108,0	190,0	3,50	●	29069
76,1	162,0	137,0	250,0	6,70	●	29070
88,9	188,0	145,0	250,0	9,50	●	29071
114,3	224,0	179,0	323,0	19,10	●	29072

